

Digital Library User Guide (EXOCAD)

Bone Level

Ti-Base

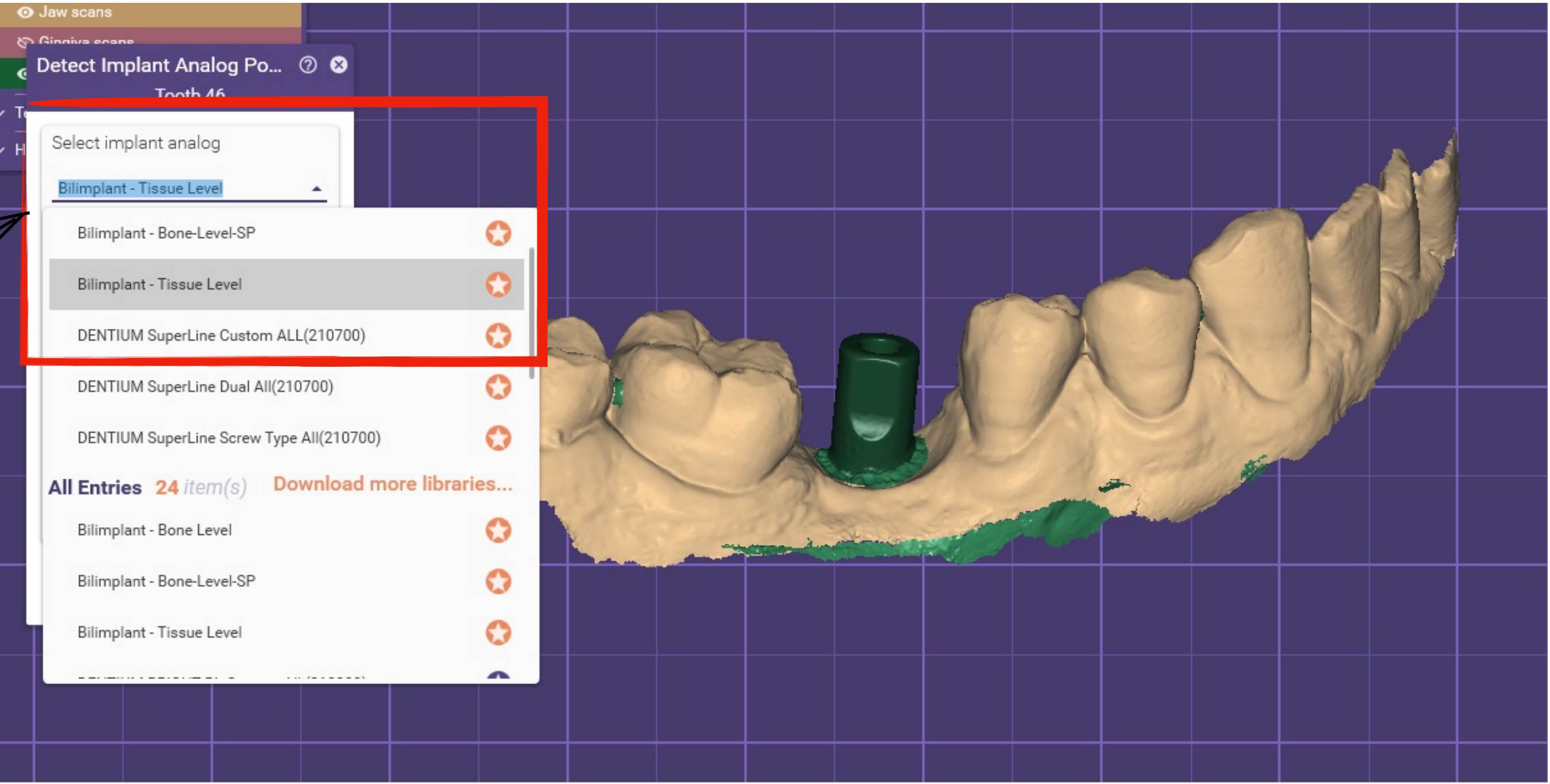
1

Implant library
selection is made

Bilimplant Tissue Level;
Tissue Level Implant Library

Bilimplant Bone Level;
Bone Level Implant Library

Bilimplant Bone Level SP;
2.9 Platform Implant Library



Digital Library User Guide (EXOCAD)

Bone Level

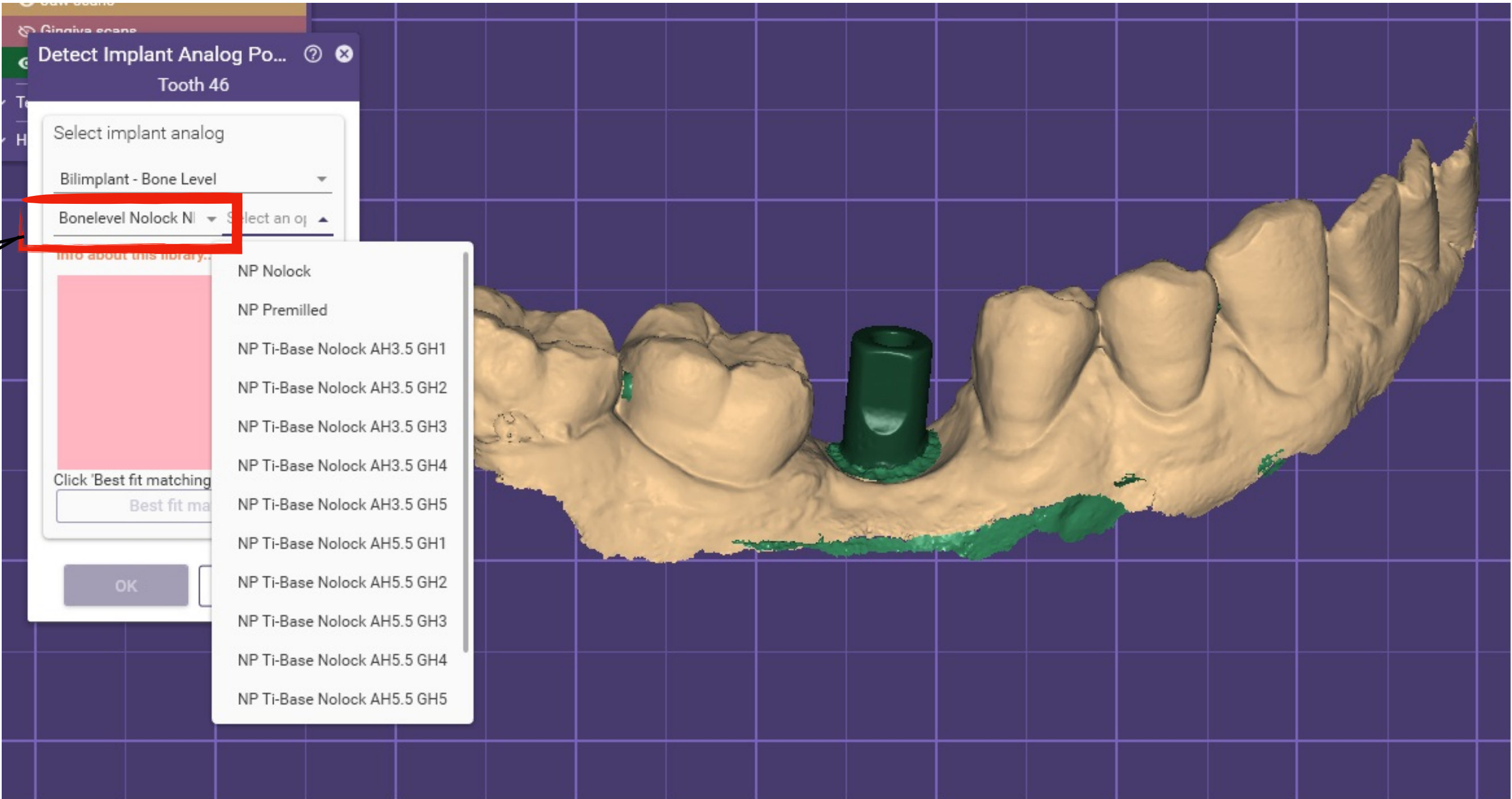
Ti-Base

2

Implant abutment type library selection is made.

Nolock RP-NP
Bridge Type Regular (Wide-1.8)
Narrow (1.6) Platform Selection

Lock RP-NP
Crown Type Regular (Wide-1.8)
Narrow (Narrow-1.6) Platform Selection



Digital Library User Guide (EXOCAD)

Bone Level

Ti-Base

3

From Ti-Base library
selection is made
according to need

NP Nolock; It is selected for
production that fits on the
implant platform

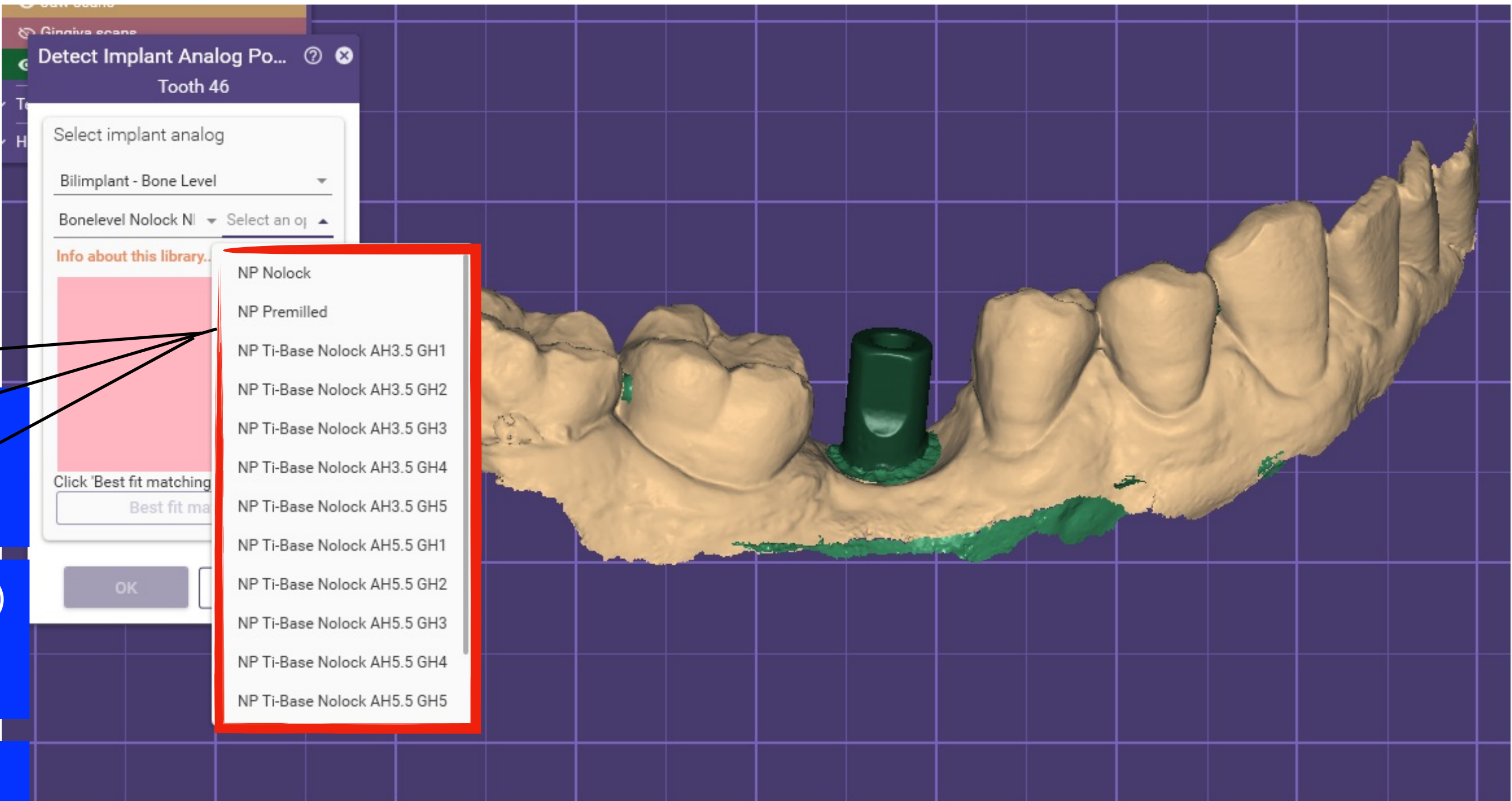
NP Premilled; Premill (Custom)
is selected for abutment
fabrication

AH (Abutment Height);
3.5-5.5 mm
GH (Gingival Height);
1-5 mm

RP Nolock; It is selected for
fabrication that fits on the
Implant Platform

RP Premilled; Premill (Custom)
is selected for abutment
fabrication

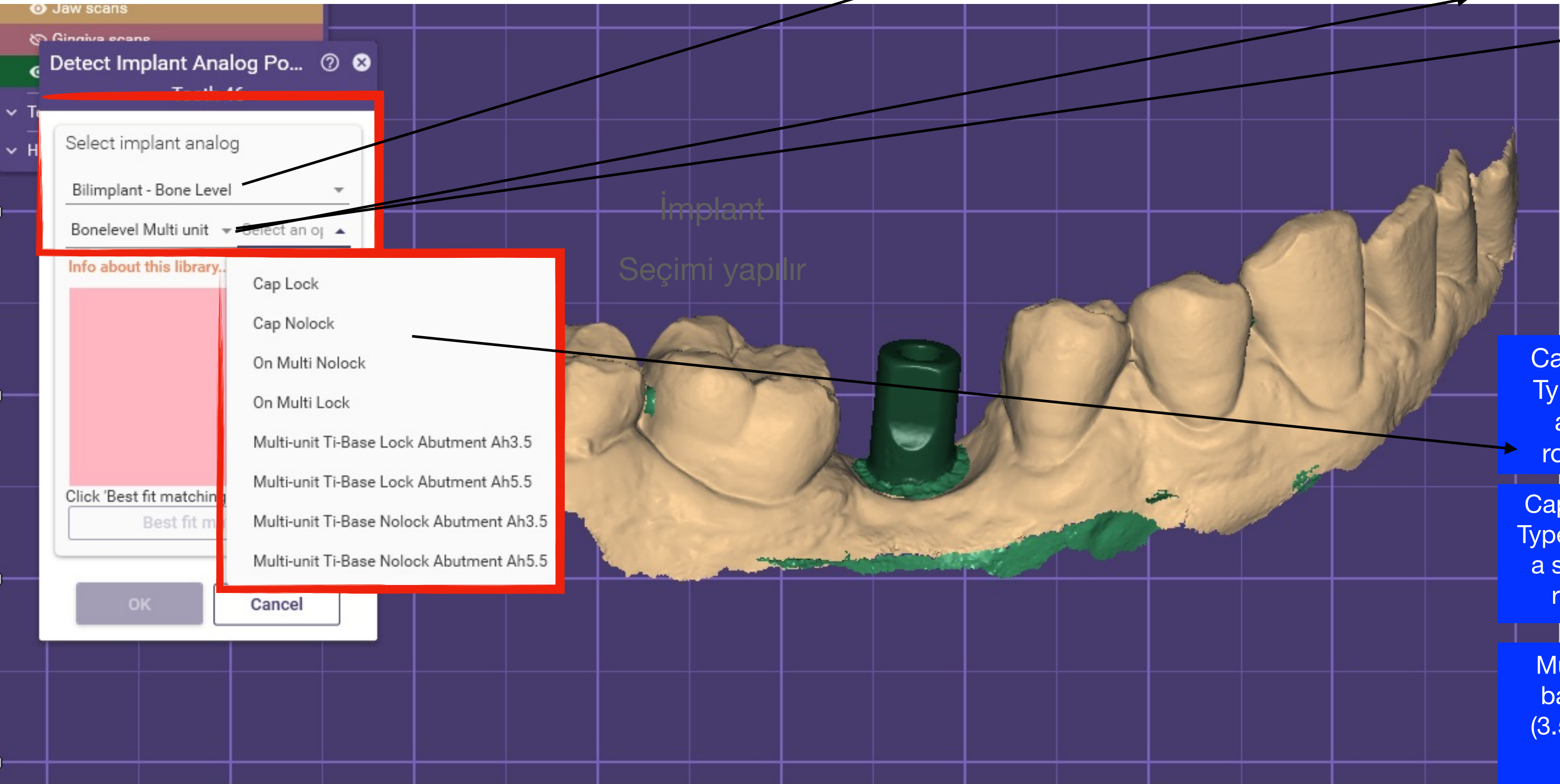
AH (Abutment Height);
3.5-5.5 mm
GH (Gingival Height);
1-5 mm



Digital Library User Guide (EXOCAD)

Bone Level

Multiunit



After selecting the implant body type, the Multunit options and sub-options are selected.

1

Bilimplant Tissue Level;
Tissue level Implant Library

Bilimplant Bone Level;
Bone level Implant Library

From the Multiunit library
selection is made according to need

2

Cap lock; Multiunit Ti-base (Crown Type) containing hex, with a single abutment height and without a rotational notch on the abutment

On Multi Nolock; It enables production (Laser Sinter, Milling, etc.) directly on the Multiunit abutment. (Bridge Type)

Cap Nolock; Multiunit Ti-base (Bridge Type), which does not contain hex, has a single abutment height and has no rotational notch on the abutment

On Multi Lock; It enables production (Laser Sinter, Milling, etc.) directly on the Multiunit abutment. (Crown Type)

Multiunit Ti-Base Lock; Multiunit Ti-base with abutment height options (3.5-5.5 mm) and rotational notch on the abutment (Crown Type)

Multiunit Ti-Base NoLock; Multiunit Ti-base with abutment height options (3.5-5.5 mm) and rotational notch on the abutment (Bridge Type)

Digital Library User Guide (EXOCAD)

Bone Level

Ti-Base

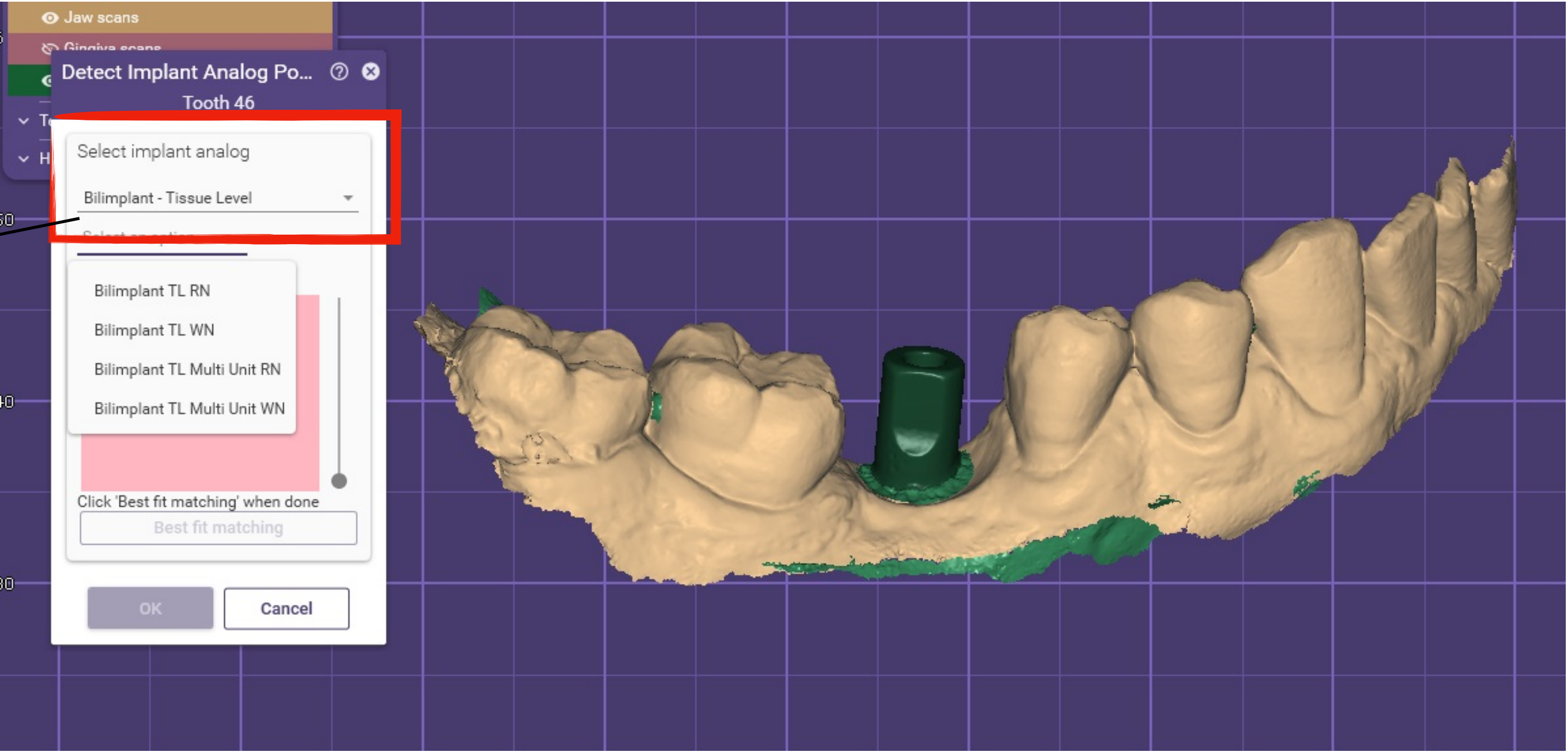
1

Implant library
selection is made

Bilimplant Tissue Level
Tissue level Implant Library

Bilimplant Bone Level
Bone level Implant Library

Bilimplant Bone Level SP
2.9 platform implant Library



Digital Library User Guide (EXOCAD)

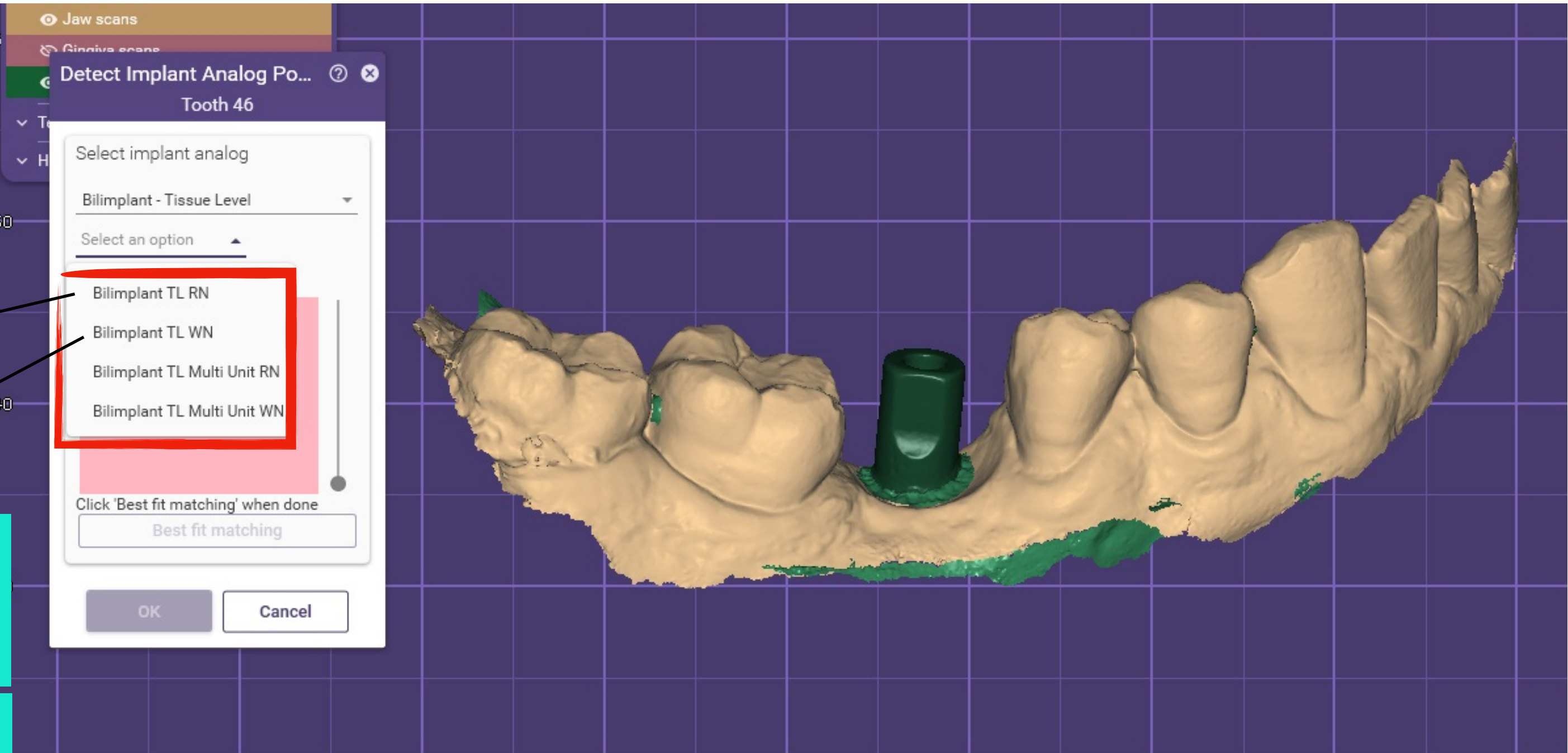
Bone Level

Ti-Base

2

Implant abutment type library selection is made

BiIMPLANT TL RN ; Tissue Level Regular (Narrow - 4.1) Platform Abutment Library	BiIMPLANT TL WN ; Tissue Level Wide (4.8) Platform Abutment Library
BiIMPLANT MULTIUNIT RN; Multiunit Regular (Narrow - 4.1) Platform Abutment Library	BiIMPLANT MULTIUNIT WN ; Multiunit Wide (4.8) Platform Abutment Library



Digital Library User Guide (EXOCAD)

Bone Level

Ti-Base

3

From Ti-Base library selection is made according to need

WN (WideNeck) Lock; Selected for fitting on a Wide 4.8 Implant Platform (Crown Type)

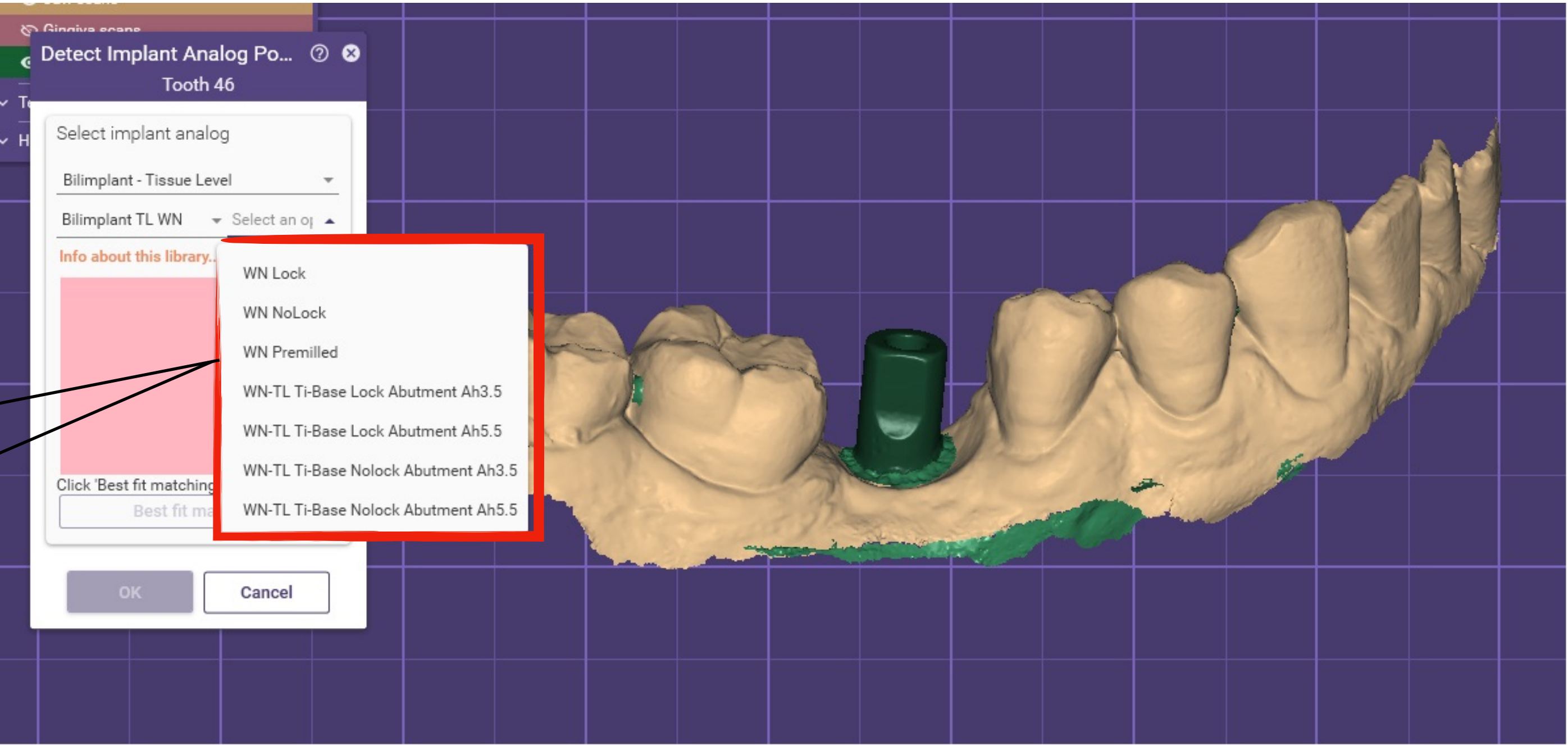
WN (WideNeck) NoLock; Selected for fitting on a Wide 4.8 Implant Platform (Bridge Type)

WN (WideNeck) Premill; 4.8 Premill (Custom) is Selected for Custom Abutment Fabrication.

RP NoLock; It is selected for fabrication that fits on implant platform.

RP Premilled; Premill (Custom) is Selected for Abutment Fabrication.

AH ; (Abutment Height) 3.5-5.5 mm
GH ; Gingival Height 1-5 mm



Digital Library User Guide (EXOCAD)

Bone Level

After selecting the implant body type, the Multunit Options and Sub-Options are selected.

Multiunit

Bilimplant Tissue Level
Tissue level Implant Library

Bilimplant Bone Level
Tissue level Implant Library

From the Multiunit library
Selection is made according to need

On Multi; It enables fabrication (Laser Sinter, Milling, etc.) directly on Multiunit Abutment.

Regular - 4.1 (RN) Multunit Ti-Base Lock
Abutment;
Multiunit Ti-base with abutment height
options (3.5-5.5 mm) and rotational notch
on the abutment
(Crown Type)

Wide - 4.8 (WN) Multunit Ti-Base Lock
Abutment;
Multiunit Ti-base with abutment height
options (3.5-5.5 mm) and rotational notch
on the abutment
(Crown Type)

Regular - 4.1 (RN) Multunit Ti-Base Lock
Abutment;
Multiunit Ti-base with abutment height
options (3.5-5.5 mm) and rotational notch
on the abutment
(Bridge Type)

Wide - 4.8 (WN) Multunit Ti-Base Lock
Abutment;
Multiunit Ti-base with abutment height
options (3.5-5.5 mm) and rotational notch
on the abutment
(Bridge Type)