

The Perfect Intersection of Experience, Quality, and Science

bilimplant®
DISCOVER THE SCIENCE



CE 2975

Dental Implant System

PRODUCT CATALOG 2025-26

ROCK-BIL



Feel the Privilege Power

DISCOVER THE SCIENCE

DÉCOUVRIR LES SCIENCES

ZBULONI SHKENCËN

BİLİMİ KEŞFET

ОТКРИЙТЕ НАУКАТА

SCOPRI LA SCIENZA



वर्जिआन की खोज करे

WISSENSCHAFT ENTDECKEN

مل عل فشتك



www.bilimplant.com

CONTENTS



GENERAL

About Us	3
Bilimplant Applications	4
Scientific Advisory Board	5



SURGICAL

SLA Surface	6
Drilling Protocol	7
Packaging Handling	8
Bilimplant Design	9
Bone and Tissue Level Implants	10
Ø2.9 Slim Implant	11
Cover Screw and Transfer Piece	12
Healing Caps	12



PROSTHETICS

Abutments	14
Cement Retained Abutments.....	15
a.Bone Level Cement Retained Abutments	15
b.Tissue Level Cement Retained Abutments	16
Temporary Abutments.....	17
Screw Retained (Multi-unit) Abutments.....	18-19
Locator Abutments	20-21
Ti-base Abutments.....	22-24
Digital Scan Bodies and Digital Analogs	25
Pre-mill Abutments.....	26-27
Impression Components and Analogs	28-30



KIT & INSTRUMENTS

Surgical Kit	32-34
Stopper Kit	35
Sinus Osteotome Kit	35
Ridge Expander Kit	36
Screw Removal Kit	36
Bguide Guided Surgery Kit	37
All on Four & Abutment Selection Kit	37
Orthodontic Mini Screw Kit	38
GBR Kit	38
Digital Libraries	39



MISSION

PROIMTECH Health Products Company aims to be a healthcare leading firm that follows the latest advances in technology, keeps innovations alive adding new values every passing day with R&D studies and works for providing high quality of health and life for everybody.



VISION

Our primary goal is to become a trusted global brand in the dental industry by providing contemporary, scientific, and high-quality manufacturing services.



As a result of our commitment to uncompromising quality and scientific principles, high success rates consistent with scientific literature have been observed in 10-year clinical and radiographic follow-ups.



Prof. Dr. Alper ALKAN

Prof. Dr., Oral and Maxillofacial Surgeon,
Proimtech Inc. Partner / Board Member, İstanbul

Prof. Dr. Çağrı URAL

Prof. Dr., Ondokuz Mayıs University, Faculty of Dentistry,
Dept. of Prosthetic, Samsun

Prof. Dr. Ahmet E. DEMİRBAŞ

Assoc. Prof., Erciyes University, Faculty of Dentistry,
Dept. of Oral and Maxillofacial Surgery, Kayseri

Prof. Dr. Hasan Ö. GÜMÜŞ

Prof. Dr., Erciyes University, Faculty of Dentistry,
Dept. of Prosthetic, Kayseri

Histomorphometric Appearance



3 Weeks (x4)

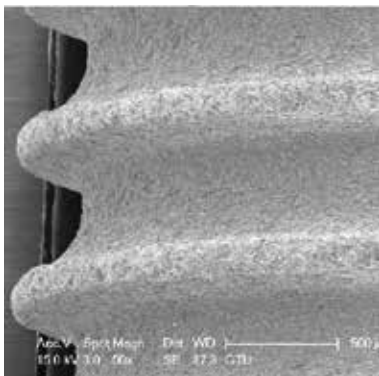


6 Weeks (x4)

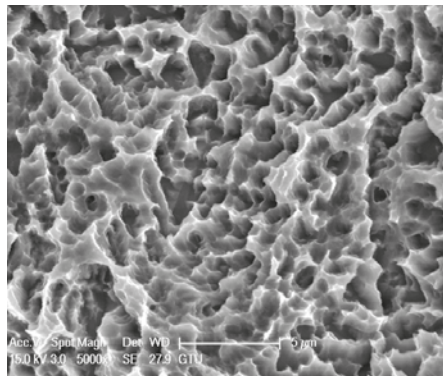
There are six critical factors affecting the process of osseointegration;

- Material compatibility
- Geometry of the implant
- Surface of the implant
- The status of the host bone
- Surgical technique
- Loading conditions

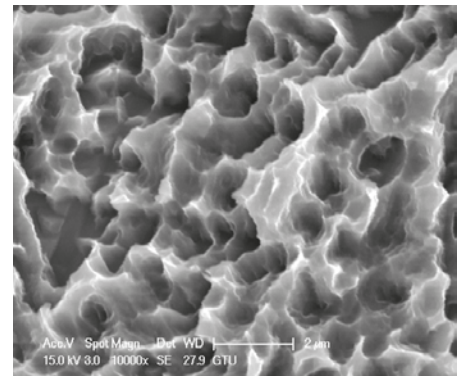
Bilimplant, a brand whose name and strength are rooted in science, is manufactured with the support of scientific literature to ensure maximum osseointegration.



50 x



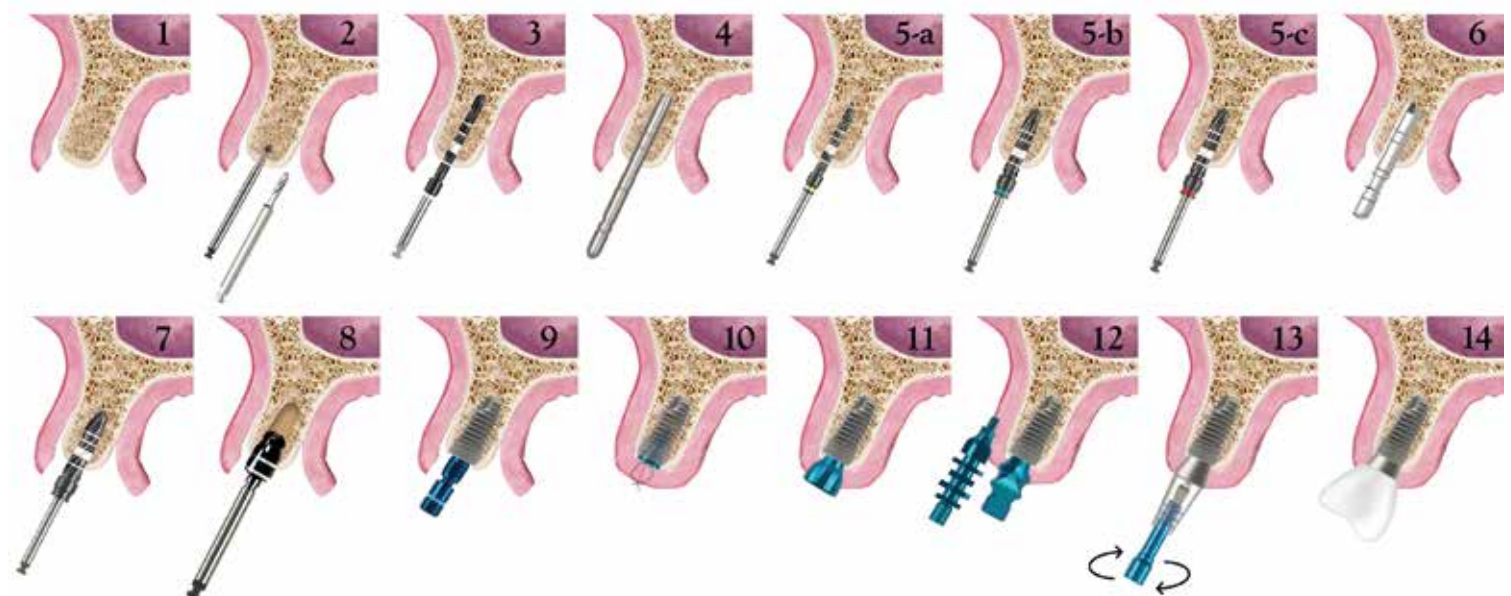
5.000 x



10.000 x

Bilimplant has an ideal and homogeneous rough surface with a Ra value of 1.5- 2.5 μm as a result of sandblasting and double etching process. This SLA surface provides the best degree of roughness for osseointegration by increasing the implant-bone contact area.

DRILLING PROTOCOL



With Surgical Contra- Angle Handpiece (20:1);
Ideal drilling (preparing the implant drill hole) speed: 800- 900 rpm / Ideal implant placement speed: 30- 40 rpm, torque: 30- 40 Ncm

1. The mucoperiosteal flap is reflected and the bone is exposed.
2. The implant position is marked with a marking drill.
3. The precise depth of the implant is determined by making an implant bed with a pilot drill.
4. The depth and angle of the implant is controlled with an alignment pin.
- 5 (a-c). The implant bed is widened sequentially with the drills till the final drill that is appropriate for the planned implant size and length.
6. The implant bed depth and angular accuracy is controlled with a parallel pin.
7. The implant bed is ready for implant placement after final drill.
8. To prevent the compressive strengths and marginal bone loss around the neck of implant, the cortical drills must be used specially for dense bones.

9. The implant is taken from its sterile vial with the aid of a ratchet adapter and is placed into the implant bed using a ratchet adapter turning it clockwise or a handpiece with a maximum speed of 40 rpm and maximum torque of 40Ncm.
10. Following the placement of implant, the cover screw is placed and tightened turning it clockwise to prevent the soft tissue ingrowth and then mucoperiosteal flap is closed.
11. After the 8-12 weeks osseointegration period, implant is exposed, cover screw is removed and appropriate healing cap is placed for gingival adaptation.
12. Following gingival adaptation an impression is taken with an open or closed tray impression technique.
13. The appropriate abutment is selected from the abutment options and is fixed using abutment screw at a torque of 30 Ncm.
14. The crown prepared is cemented or screwed over the abutment.

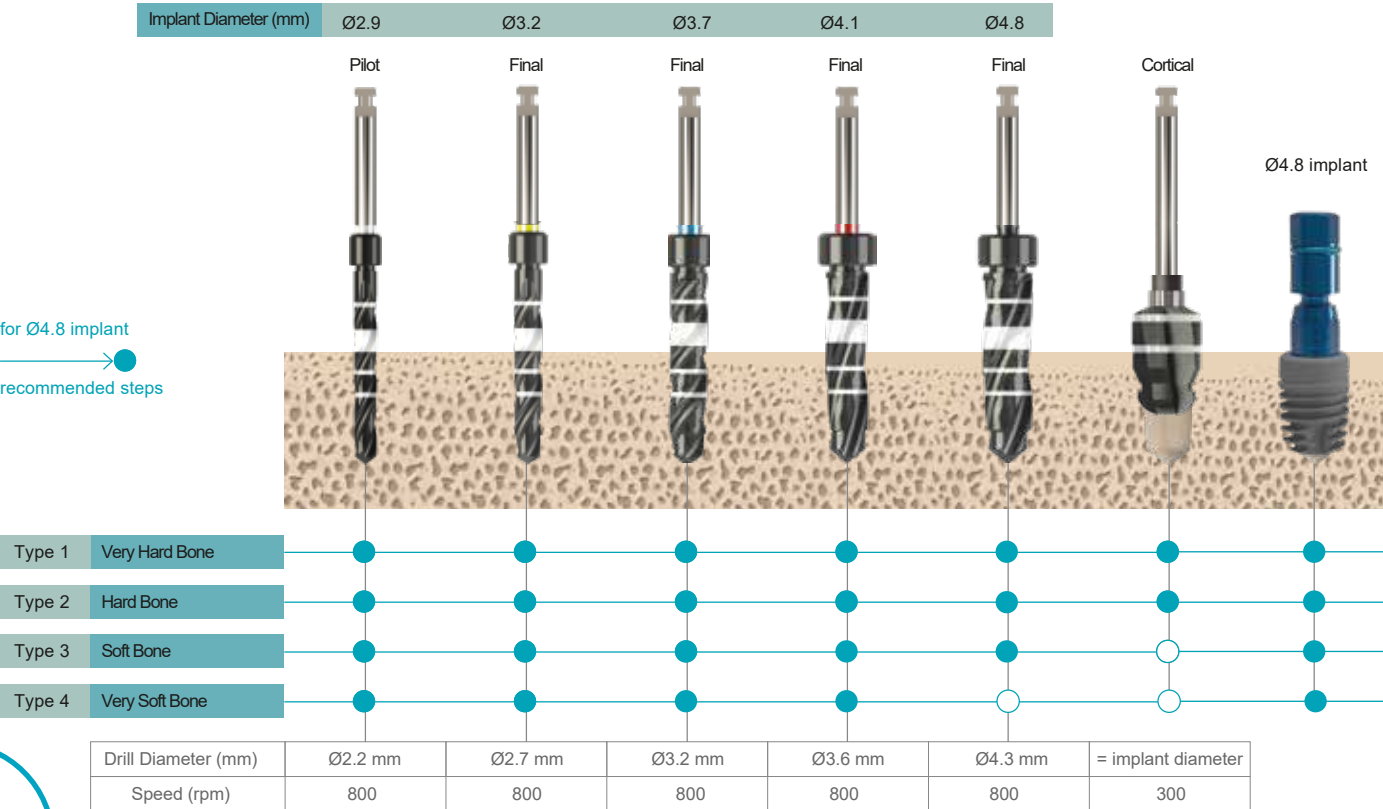


Figure 1. Recommended drilling procedure for placement of bone/tissue level implants based on bone types.

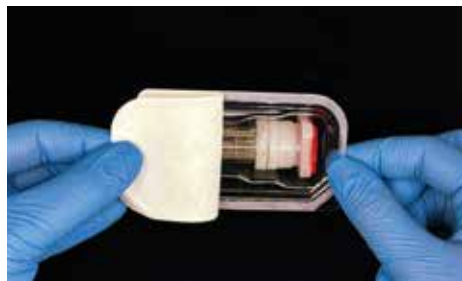
PACKAGING HANDLING



The box is opened.



The blister pack is removed from the box.



The tyvek paper is removed.



The cap of the implant vial is opened turning it clockwise. Do not use a product with a broken security ring. The sealing ring inside of the cap provides extra security in addition to tyvek paper to ensure sterilization.



The implant is removed from the tube together with its cover.



The insertion tool is attached to the color coded transfer piece (yellow or blue) that is mounted on the implant. Delicate manufacturing and the silicon ring prevents implant falling into the mouth.



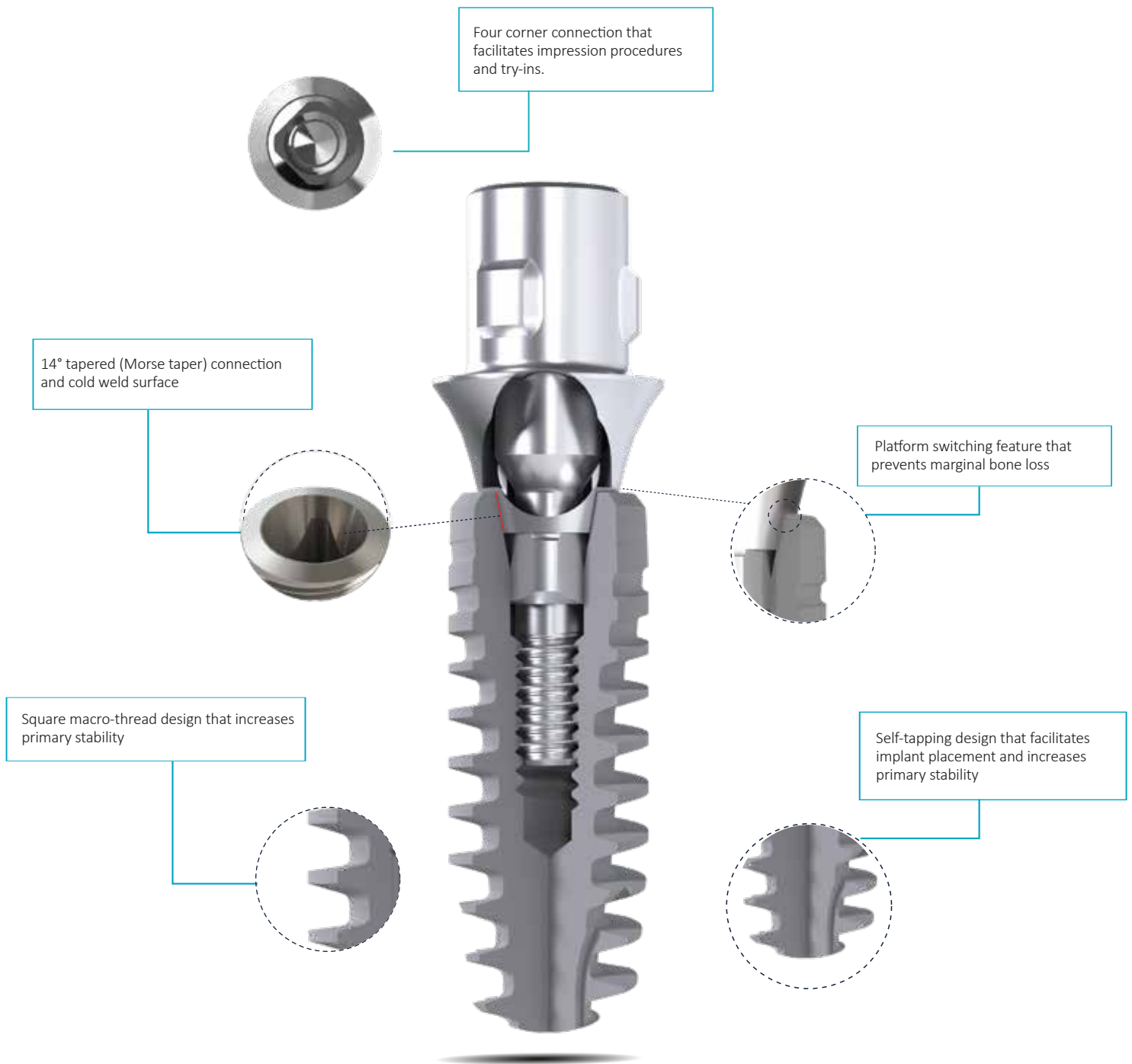
The implant is removed from the transparent plastic body turning the ratchet 90° angle. The transfer piece is removed by pulling upwards following the placement of implant into implant bed.



The plastic cap is removed to take the cover screw from the box.

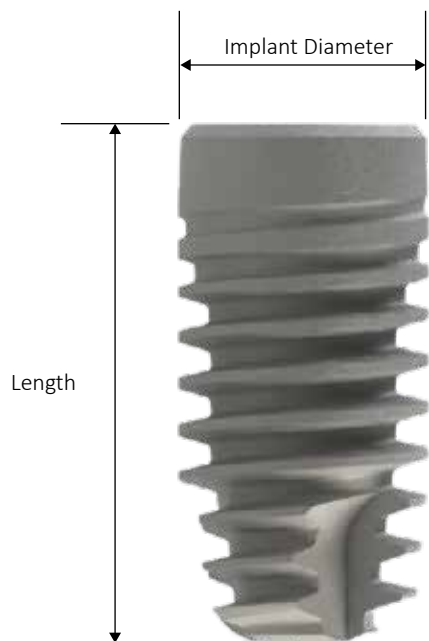


The screwdriver (SCS) is mounted on the cover screw. It is gently pressed and removed pulling upwards.



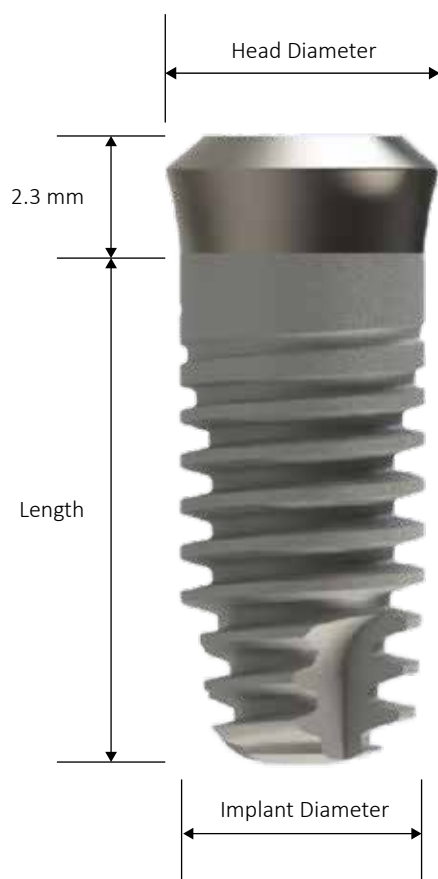
Bilimplant bone level implants were designed for a natural look and sensation providing great flexibility and a balanced prosthetic portfolio for every indication. It stands for excellent clinical performance, superior esthetics and high patient satisfaction in daily practice.

BONE LEVEL IMPLANTS



Product No.	Implant Diameter	Length	
PBL2910	Ø 2.9 mm	10 mm	Slim (SP, M1.4)
PBL2912		12 mm	
PBL2914		14 mm	
PBL3208	Ø 3.2 mm	8 mm	Narrow Platform (yellow) (NP, M1.6)
PBL3210		10 mm	
PBL3212		12 mm	
PBL3214	Ø 3.7 mm	14 mm	
PBL3708		8 mm	
PBL3710		10 mm	
PBL3712	Ø 4.1 mm	12 mm	Regular Platform (Blue) (RP, M1.8)
PBL3714		14 mm	
PBL4108		8 mm	
PBL4110	Ø 4.8 mm	10 mm	
PBL4112		12 mm	
PBL4114		14 mm	
PBL4808	Ø 4.8 mm	8 mm	Regular Platform (Blue) (RP, M1.8)
PBL4810		10 mm	
PBL4812		12 mm	

TISSUE LEVEL IMPLANTS



Product No.	Implant Diameter	Length	Head Diameter
PTL4106	Ø 4.1 mm	6 mm	Ø 4,8 mm
PTL4108		8 mm	
PTL4110		10 mm	
PTL4112		12 mm	
PTL4114		14 mm	
PTL4806	Ø 4.8 mm	6 mm	Ø 6 mm
PTL4808		8 mm	
PTL4810		10 mm	
PTL4812		12 mm	

Regular Platform (Blue)
(RP, M1.8)

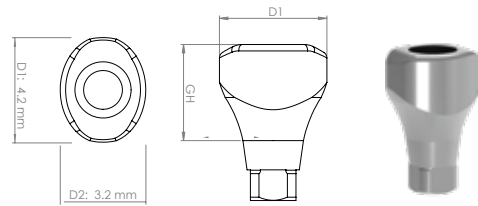
Bone Level Ø2.9 Slim (SP) Implant

SP Implant Ø2.9



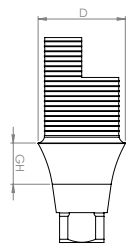
PBL2910	PBL2912	PBL2914	Product No.
10	12	14	Length (mm)

Healing Caps



D1 x D2	GH	Product No.
4.2 x 3.2 mm	2.5 mm	BLHCH25SP
	4 mm	BLHCH4SP
	6 mm	BLHCH6SP

Ti - Base Angled Abutments



D	GH	Product No.
3.5 mm	1 mm	BLATIBLAGH1SP
	2 mm	BLATIBLAGH2SP
	3 mm	BLATIBLAGH3SP

Impression Post
Open Tray



Product No.
IP0021

Impression Post
Closed Tray



Product No.
IP0023

Analog



Product No.
IP0025

Indications

Lateral incisors (maxilla)



Experience the Art of Slim

- Ø2.9 mm implant is specifically engineered to address esthetic challenges in compromised situations such as narrow interdental spaces or reduced bone height.
- Enjoy the privilege of the Ø2.9 mm implant in the aesthetic zone and where narrow diameter implant use is indicated!
- Easy handling
- Ensured precision against rotation and long-term mechanical stability
- Guidance by 4 grooves for precise positioning
- 8° conical connection

Central and lateral incisors (mandible)

Cover Screws

for Ø3.2 and Ø3.7 Bone Level Implants

PCSNP



Bone Level - Narrow Platform

for Ø4.1 and Ø4.8 Bone Level Implants

PCSRP



Bone Level- Regular Platform

for Ø4.1 and Ø4.8 Tissue Level Implants

PCSTRP



Tissue Level- Regular Platform

Transfer Pieces

The transfer piece has an easily removable system following the implant placement. It has a safety ring breaking at a force of 125 Ncm in dense bone preventing marginal bone loss and protecting the inner surface of implant.

for Ø3.2 and Ø3.7 Bone Level Implants

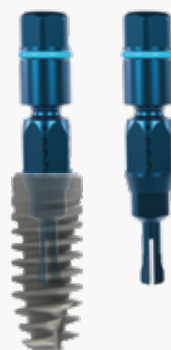
PTPNP



Bone Level - Narrow Platform

for Ø4.1 and Ø4.8 Bone Level Implants

PTPRP



Bone Level- Regular Platform

for Ø4.1 and Ø4.8 Tissue Level Implants

PTPRP

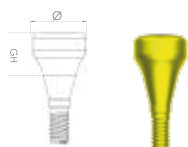


Tissue Level- Regular Platform

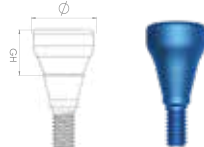
Healing Caps

Bone Level

for Ø3.2 ve Ø3.7 implants



for Ø4.1 ve Ø4.8 implants



Diameter (mm)	GH	Product No.	Diameter (mm)	GH	Product No.
Ø3.5	3 mm	BLHC35H3NP	Ø5.0	3 mm	BLHC50H3RP
Ø3.5	4 mm	BLHC35H4NP	Ø5.0	4 mm	BLHC50H4RP
Ø3.5	6 mm	BLHC35H6NP	Ø5.0	6 mm	BLHC50H6RP
Ø4.5	3 mm	BLHC45H3NP	Ø6.5	3 mm	BLHC65H3RP
Ø4.5	4 mm	BLHC45H4NP	Ø6.5	4 mm	BLHC65H4RP
Ø4.5	6 mm	BLHC45H6NP	Ø6.5	6 mm	BLHC65H6RP

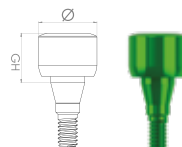
Screw Retained (Multi-Unit)



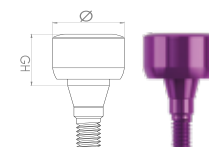
Diameter (mm)	GH	Product No.
Ø4.5	4.9 mm	BLHCMLT

Tissue Level

for Ø4.1 implants



for Ø4.8 implants



Diameter (mm)	GH	Product No.	Diameter (mm)	GH	Product No.
Ø4.1	2 mm	RNTLHCH2	Ø4.8	2 mm	WNTLHCH2
Ø4.1	4 mm	RNTLHCH4	Ø4.8	4 mm	WNTLHCH4
Ø4.1	6 mm	RNTLHCH6	Ø4.8	6 mm	WNTLHCH6

Screw Retained (Multi-Unit)
For Ø4.1 Implants



Diameter (mm)	GH	Product No.
Ø5.45	4.7 mm	RNTLHCMLT

Screw Retained (Multi-Unit)
For Ø4.8 Implants



Diameter (mm)	GH	Product No.
Ø6.75	5 mm	WNTLHCMLT

ABUTMENTS

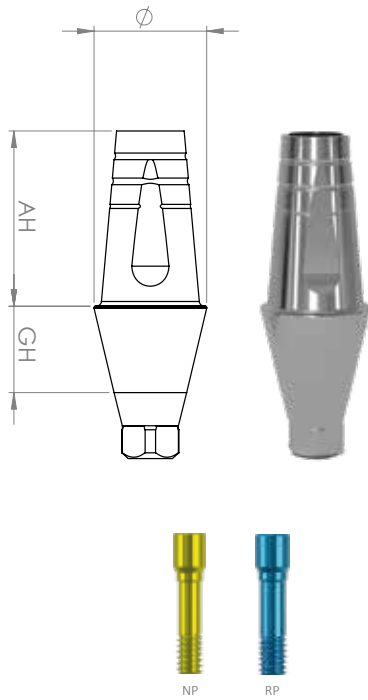
The loading torque value on all abutments is **30 Ncm**.

For multi-unit abutments, the loading torque is **30 Ncm** and the secondary occlusal top screw torque is **15 Ncm**.

Bone Level Abutments (Cement Retained)

Straight Abutments

Bone Level



Narrow Platform

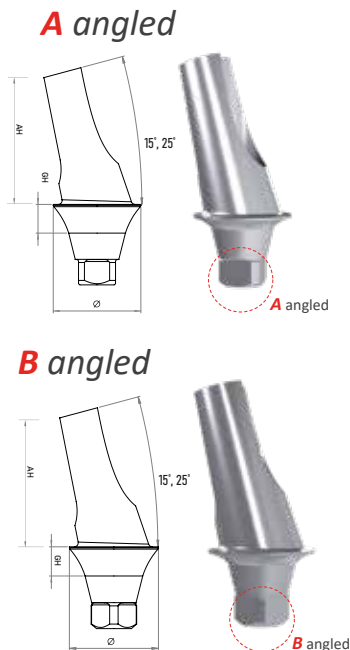
Regular Platform

Diameter (mm)	GH	AH	Product No.
Ø3.5	1 mm	5.5 mm	BLSA35GH1AH55NP
Ø3.5	2 mm	5.5 mm	BLSA35GH2AH55NP
Ø3.5	3 mm	5.5 mm	BLSA35GH3AH55NP
Ø3.5	4 mm	5.5 mm	BLSA35GH4AH55NP
Ø3.5	5 mm	5.5 mm	BLSA35GH5AH55NP
Ø4.5	1 mm	7 mm	BLSA45GH1AH7NP
Ø4.5	2 mm	7 mm	BLSA45GH2AH7NP
Ø4.5	3 mm	7 mm	BLSA45GH3AH7NP
Ø4.5	4 mm	7 mm	BLSA45GH4AH7NP
Ø4.5	5 mm	7 mm	BLSA45GH5AH7NP
Ø5	1 mm	7 mm	BLSA50GH1AH7RP
Ø5	2 mm	7 mm	BLSA50GH2AH7RP
Ø5	3 mm	7 mm	BLSA50GH3AH7RP
Ø5	4 mm	7 mm	BLSA50GH4AH7RP
Ø5	5 mm	7 mm	BLSA50GH5AH7RP
Ø6	1 mm	7 mm	BLSA60GH1AH7RP
Ø6	2 mm	7 mm	BLSA60GH2AH7RP
Ø6	3 mm	7 mm	BLSA60GH3AH7RP
Ø6	4 mm	7 mm	BLSA60GH4AH7RP
Ø6	5 mm	7 mm	BLSA60GH5AH7RP

The risk of screw loosening increases due to metal fatigue in repetitive wearing and removal of prosthesis in all screws. Bilimplant recommends the use of clinical screws during delivery of prosthesis which are colored and have improved surface properties. Standard colorless screws are recommended only for laboratory procedures and clinical try-ins.

Angled Abutments

Bone Level



Narrow Platform

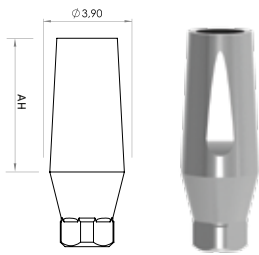
Regular Platform

Angle	GH	AH	Product No. A angled / B angled
15°	1 mm	7 mm	BLAAA15GH1AH7NP / BLAAB15GH1AH7NP
15°	2 mm	7 mm	BLAAA15GH2AH7NP / BLAAB15GH2AH7NP
15°	3 mm	7 mm	BLAAA15GH3AH7NP / BLAAB15GH3AH7NP
15°	4 mm	7 mm	BLAAA15GH4AH7NP / BLAAB15GH4AH7NP
25°	1 mm	7 mm	BLAAA25GH1AH7NP / BLAAB25GH1AH7NP
25°	2 mm	7 mm	BLAAA25GH2AH7NP / BLAAB25GH2AH7NP
25°	3 mm	7 mm	BLAAA25GH3AH7NP / BLAAB25GH3AH7NP
25°	4 mm	7 mm	BLAAA25GH4AH7NP / BLAAB25GH4AH7NP
15°	1 mm	7 mm	BLAAA15GH1AH7RP / BLAAB15GH1AH7RP
15°	2 mm	7 mm	BLAAA15GH2AH7RP / BLAAB15GH2AH7RP
15°	3 mm	7 mm	BLAAA15GH3AH7RP / BLAAB15GH3AH7RP
15°	4 mm	7 mm	BLAAA15GH4AH7RP / BLAAB15GH4AH7RP
25°	1 mm	7 mm	BLAAA25GH1AH7RP / BLAAB25GH1AH7RP
25°	2 mm	7 mm	BLAAA25GH2AH7RP / BLAAB25GH2AH7RP
25°	3 mm	7 mm	BLAAA25GH3AH7RP / BLAAB25GH3AH7RP
25°	4 mm	7 mm	BLAAA25GH4AH7RP / BLAAB25GH4AH7RP

A and B type angled abutments attached to implants in 8 different positions are produced in order to increase placement options. Thus, the need for abutment preparation is reduced.

Tissue Level Abutments (Cement Retained)

Straight Abutments



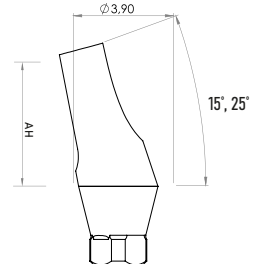
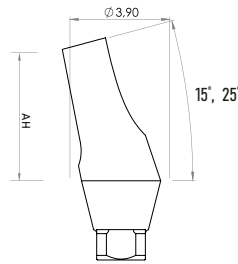
AH

Product No.

7 mm

TLAAAH7

Angled Abutments



Angled

AH

Product No.

15°

7 mm

TLAAA15AH7

25°

7 mm

TLAAA25AH7

Angled

AH

Product No.

15°

7 mm

TLAAB15AH7

25°

7 mm

TLAAB25AH7

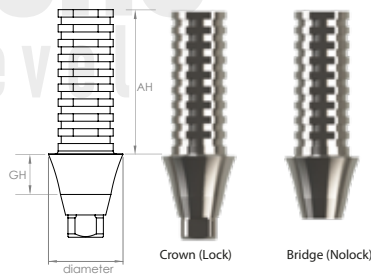
“Laughter is a trenquilizer with no side effects.”

Arnold Glashow



Cemented Temporary Abutments

Bone Level

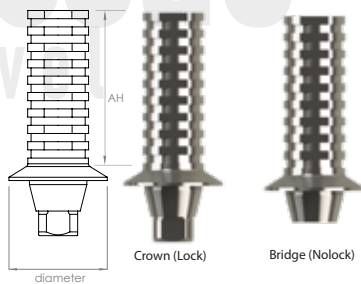


Narrow Platform

Regular Platform

Diameter (mm)	GH	AH	Crown (Lock) Product No.	Bridge (Nolock) Product No.
Ø4.3	1 mm	9.7mm	BLTAGH1LNP	BLTAGH1NLNP
Ø4.3	2 mm	9.7mm	BLTAGH2LNP	BLTAGH2NLNP
Ø4.3	3 mm	9.7mm	BLTAGH3LNP	BLTAGH3NLNP
Ø4.3	4 mm	9.7mm	BLTAGH4LNP	BLTAGH4NLNP
Ø4.3	5 mm	9.7mm	BLTAGH5LNP	BLTAGH5NLNP
Ø5.0	1 mm	9.7mm	BLTAGH1LRP	BLTAGH1NLRP
Ø5.0	2 mm	9.7mm	BLTAGH2LRP	BLTAGH2NLRP
Ø5.0	3 mm	9.7mm	BLTAGH3LRP	BLTAGH3NLRP
Ø5.0	4 mm	9.7mm	BLTAGH4LRP	BLTAGH4NLRP
Ø5.0	5 mm	9.7mm	BLTAGH5LRP	BLTAGH5NLRP

Tissue Level



Ø4.1 implant

Ø4.8 implant

Diameter (mm)	AH	Crown (Lock) Product No.	Bridge (Nolock) Product No.
Ø4.8	9.7mm	RNTLTLOCKA	RNTLTNLOCKA
Ø6.0	9.7mm	WNTLTLOCKA	WNTLTNLOCKA

Multi-unit Temporary Abutments

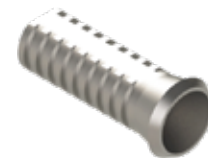
Bone Level

Crown (Lock)



BLMLTAL

Bridge (Nolock)



BLMLTANL

Tissue Level

Crown (Lock)



RNTLTAL

Ø4.1

WNTLTAL

Ø4.8

Bridge (Nolock)



RNTLTANL

Ø4.1

WNTLTANL

Ø4.8

AH height of all multi-unit temporary abutments is 9 mm.

Straight Multi-unit (Screw Retained) Abutments

Bone Level



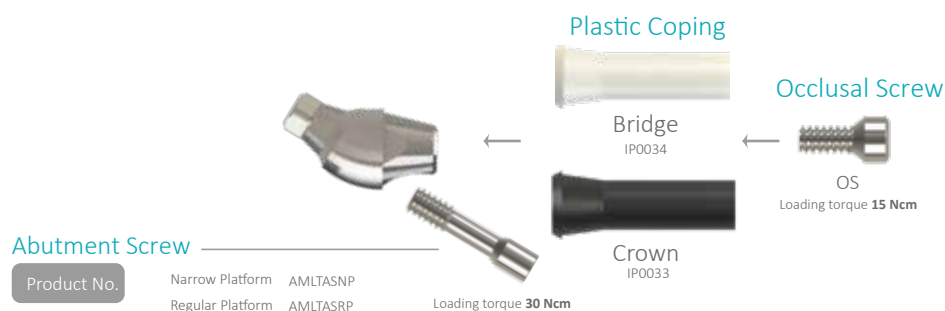
	Diameter (mm)	GH	AH	Product No.
Narrow Platform	Ø4.5	1 mm	2.7 mm	BLMLTSA45GH1NP
	Ø4.5	2 mm	2.7 mm	BLMLTSA45GH2NP
	Ø4.5	3 mm	2.7 mm	BLMLTSA45GH3NP
	Ø4.5	4 mm	2.7 mm	BLMLTSA45GH4NP
	Ø4.5	5 mm	2.7 mm	BLMLTSA45GH5NP
Regular Platform	Ø4.5	1 mm	2.7 mm	BLMLTSA45GH1RP
	Ø4.5	2 mm	2.7 mm	BLMLTSA45GH2RP
	Ø4.5	3 mm	2.7 mm	BLMLTSA45GH3RP
	Ø4.5	4 mm	2.7 mm	BLMLTSA45GH4RP
	Ø4.5	5 mm	2.7 mm	BLMLTSA45GH5RP

Tissue Level

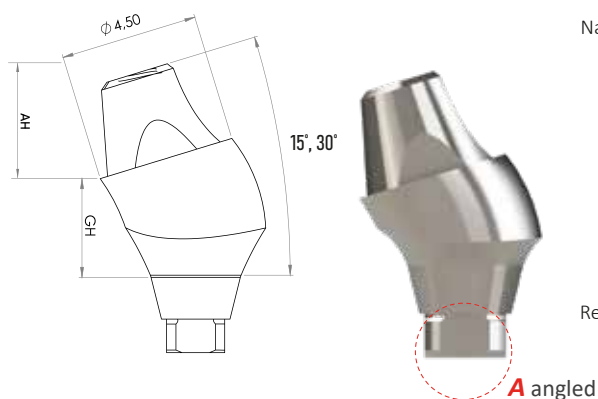


Angled Multi-unit (Screw Retained) Abutments

Bone Level



A angled abutments



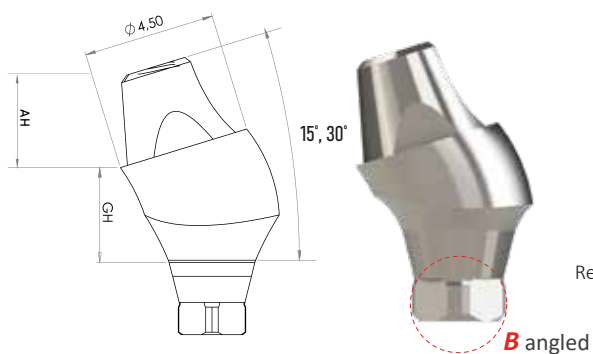
Narrow Platform

Regular Platform

Angled GH AH Product No.

15°	1 mm	2.7 mm	BLMLTAAA15GH1NP
15°	2 mm	2.7 mm	BLMLTAAA15GH2NP
15°	3 mm	2.7 mm	BLMLTAAA15GH3NP
15°	4 mm	2.7 mm	BLMLTAAA15GH4NP
30°	1 mm	2.7 mm	BLMLTAAA30GH1NP
30°	2 mm	2.7 mm	BLMLTAAA30GH2NP
30°	3 mm	2.7 mm	BLMLTAAA30GH3NP
30°	4 mm	2.7 mm	BLMLTAAA30GH4NP
15°	1 mm	2.7 mm	BLMLTAAA15GH1RP
15°	2 mm	2.7 mm	BLMLTAAA15GH2RP
15°	3 mm	2.7 mm	BLMLTAAA15GH3RP
15°	4 mm	2.7 mm	BLMLTAAA15GH4RP
30°	1 mm	2.7 mm	BLMLTAAA30GH1RP
30°	2 mm	2.7 mm	BLMLTAAA30GH2RP
30°	3 mm	2.7 mm	BLMLTAAA30GH3RP
30°	4 mm	2.7 mm	BLMLTAAA30GH4RP

B angled abutments



Narrow Platform

Regular Platform

Angled GH AH Product No.

15°	1 mm	2.7 mm	BLMLTAAB15GH1NP
15°	2 mm	2.7 mm	BLMLTAAB15GH2NP
15°	3 mm	2.7 mm	BLMLTAAB15GH3NP
15°	4 mm	2.7 mm	BLMLTAAB15GH4NP
30°	1 mm	2.7 mm	BLMLTAAB30GH1NP
30°	2 mm	2.7 mm	BLMLTAAB30GH2NP
30°	3 mm	2.7 mm	BLMLTAAB30GH3NP
30°	4 mm	2.7 mm	BLMLTAAB30GH4NP
15°	1 mm	2.7 mm	BLMLTAAB15GH1RP
15°	2 mm	2.7 mm	BLMLTAAB15GH2RP
15°	3 mm	2.7 mm	BLMLTAAB15GH3RP
15°	4 mm	2.7 mm	BLMLTAAB15GH4RP
30°	1 mm	2.7 mm	BLMLTAAB30GH1RP
30°	2 mm	2.7 mm	BLMLTAAB30GH2RP
30°	3 mm	2.7 mm	BLMLTAAB30GH3RP
30°	4 mm	2.7 mm	BLMLTAAB30GH4RP

Locator Abutments

LOC-BIL Retentive System®

Experience comfort and reliability in implant-supported overdentures!

DLC SURFACE
DLC coated locator abutments show less bacteria and calculus accumulation thanks to its scratch-free surface hardness and smoothness.

DIVERGENCE COMPENSATION
In combination with the angled Loc-bil® abutments they can be used to compensate for divergences of up to 70° between the implants.

GINGIVA HEIGHTS
There is 5 gingiva heights for the straight and angled abutments

PEEK MATRICES
PEEK inserts offered sufficient retention for long-term use over 30,000 insertion-separating cycles, both for orthogonal and tilted implants.

Medium
1820 g

Strong
2260 g

Light
1130 g

Locator Analog*
Ürün Kodu
IP0057

Locator Impression Post*
Ürün Kodu
IP0058

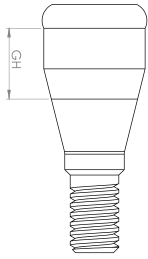
*This product is used with loc-bil abutments for both bone level and tissue level implants.



Bilimplant® metal housings and PEEK matrices must be used together and should not be combined with products from other brands.

Straight Locator Abutments

Bone Level



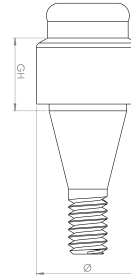
Narrow Platform

Regular Platform

GH Product No.

2 mm	BLOC GH2NP
3 mm	BLOC GH3NP
4 mm	BLOC GH4NP
5 mm	BLOC GH5NP
6 mm	BLOC GH6NP
2 mm	BLOC GH2RP
3 mm	BLOC GH3RP
4 mm	BLOC GH4RP
5 mm	BLOC GH5RP
6 mm	BLOC GH6RP

Tissue Level



GH Product No.

2 mm	RNTLOC GH2
3 mm	RNTLOC GH3
4 mm	RNTLOC GH4
5 mm	RNTLOC GH5
6 mm	RNTLOC GH6
2 mm	WNTLOC GH2
3 mm	WNTLOC GH3
4 mm	WNTLOC GH4
5 mm	WNTLOC GH5
6 mm	WNTLOC GH6

Bone Level



A angled

B angled

Angled GH A açılı B açılı Product No. Product No.

Narrow Platform

Regular Platform

15°	2 mm	BLOCA15GH2NP	BLOCB15GH2NP
15°	3 mm	BLOCA15GH3NP	BLOCB15GH3NP
15°	4 mm	BLOCA15GH4NP	BLOCB15GH4NP
15°	5 mm	BLOCA15GH5NP	BLOCB15GH5NP
15°	6 mm	BLOCA15GH6NP	BLOCB15GH6NP
15°	2 mm	BLOCA15GH2RP	BLOCB15GH2RP
15°	3 mm	BLOCA15GH3RP	BLOCB15GH3RP
15°	4 mm	BLOCA15GH4RP	BLOCB15GH4RP
15°	5 mm	BLOCA15GH5RP	BLOCB15GH5RP
15°	6 mm	BLOCA15GH6RP	BLOCB15GH6RP

Tissue Level



A angled

B angled

Angled GH A açılı B açılı Product No. Product No.

Narrow Platform

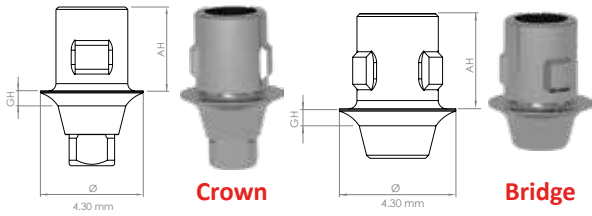
Regular Platform

15°	2 mm	RNTLOCA15GH2	RNTLOCB15GH2
15°	3 mm	RNTLOCA15GH3	RNTLOCB15GH3
15°	4 mm	RNTLOCA15GH4	RNTLOCB15GH4
15°	5 mm	RNTLOCA15GH5	RNTLOCB15GH5
15°	6 mm	RNTLOCA15GH6	RNTLOCB15GH6
15°	2 mm	WNTLOCA15GH2	WNTLOCB15GH2
15°	3 mm	WNTLOCA15GH3	WNTLOCB15GH3
15°	4 mm	WNTLOCA15GH4	WNTLOCB15GH4
15°	5 mm	WNTLOCA15GH5	WNTLOCB15GH5
15°	6 mm	WNTLOCA15GH6	WNTLOCB15GH6

Ti-BASE ABUTMENTS

Bone Level Ti-Base Abutments

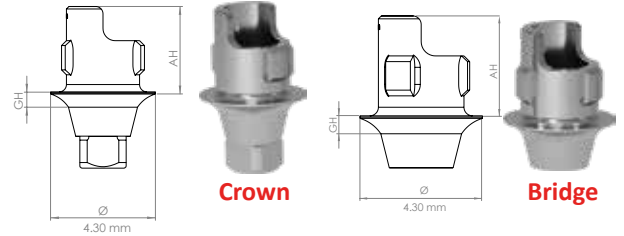
Straight Abutments



GH	AH	Crown (Lock) Product No	Bridge (Nolock) Product No
----	----	----------------------------	-------------------------------

Narrow Platform	1 mm	3.5 mm	BLSTIBLAH35GH1NP	BLSTIBNLAH35GH1NP
	2 mm	3.5 mm	BLSTIBLAH35GH2NP	BLSTIBNLAH35GH2NP
	3 mm	3.5 mm	BLSTIBLAH35GH3NP	BLSTIBNLAH35GH3NP
	4 mm	3.5 mm	BLSTIBLAH35GH4NP	BLSTIBNLAH35GH4NP
	5 mm	3.5 mm	BLSTIBLAH35GH5NP	BLSTIBNLAH35GH5NP
	1 mm	5.5 mm	BLSTIBLAH55GH1NP	BLSTIBNLAH55GH1NP
	2 mm	5.5 mm	BLSTIBLAH55GH2NP	BLSTIBNLAH55GH2NP
	3 mm	5.5 mm	BLSTIBLAH55GH3NP	BLSTIBNLAH55GH3NP
	4 mm	5.5 mm	BLSTIBLAH55GH4NP	BLSTIBNLAH55GH4NP
	5 mm	5.5 mm	BLSTIBLAH55GH5NP	BLSTIBNLAH55GH5NP
Regular Platform	1 mm	3.5 mm	BLSTIBLAH35GH1RP	BLSTIBNLAH35GH1RP
	2 mm	3.5 mm	BLSTIBLAH35GH2RP	BLSTIBNLAH35GH2RP
	3 mm	3.5 mm	BLSTIBLAH35GH3RP	BLSTIBNLAH35GH3RP
	4 mm	3.5 mm	BLSTIBLAH35GH4RP	BLSTIBNLAH35GH4RP
	5 mm	3.5 mm	BLSTIBLAH35GH5RP	BLSTIBNLAH35GH5RP
	1 mm	5.5 mm	BLSTIBLAH55GH1RP	BLSTIBNLAH55GH1RP
	2 mm	5.5 mm	BLSTIBLAH55GH2RP	BLSTIBNLAH55GH2RP
	3 mm	5.5 mm	BLSTIBLAH55GH3RP	BLSTIBNLAH55GH3RP
	4 mm	5.5 mm	BLSTIBLAH55GH4RP	BLSTIBNLAH55GH4RP
	5 mm	5.5 mm	BLSTIBLAH55GH5RP	BLSTIBNLAH55GH5RP

Angled Abutments

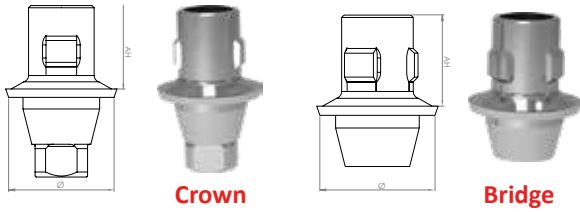


GH	AH	Crown (Lock) Product No	Bridge (Nolock) Product No
----	----	----------------------------	-------------------------------

Yellow Arrow	1 mm	3.5 mm	BLATIBLAH35GH1NP	BLATIBNLAH35GH1NP
	1 mm	5.5 mm	BLATIBLAH55GH1NP	BLATIBNLAH55GH1NP
Blue Arrow	1 mm	3.5 mm	BLATIBLAH35GH1RP	BLATIBNLAH35GH1RP
	1 mm	5.5 mm	BLATIBLAH55GH1RP	BLATIBNLAH55GH1RP

Tissue Level Ti-Base Abutments

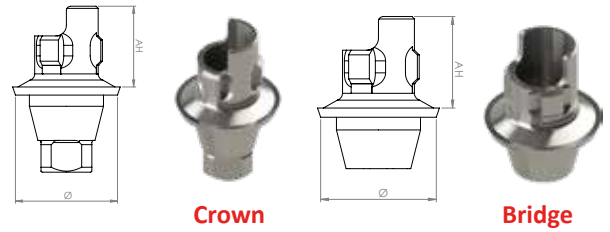
Straight Abutments



	GH	AH	Crown (Lock) Product No	Bridge (Nolock) Product No
Ø4.1 implant RN (regular neck)	Ø4.8 mm	3.5 mm	RNTLSTIBLAH35	RNTLSTIBNLAH35
	Ø4.8 mm	5.5 mm	RNTLSTIBLAH55	RNTLSTIBNLAH55
Ø4.8 implant WN (wide neck)	Ø6 mm	3.5 mm	WNTLSTIBLAH35	WNTLSTIBNLAH35
	Ø6 mm	5.5 mm	WNTLSTIBLAH55	WNTLSTIBNLAH55

RN (regular neck), WN (wide neck) : In Tissue Level ti-base abutments, platforms are named according to the neck of the analogue.

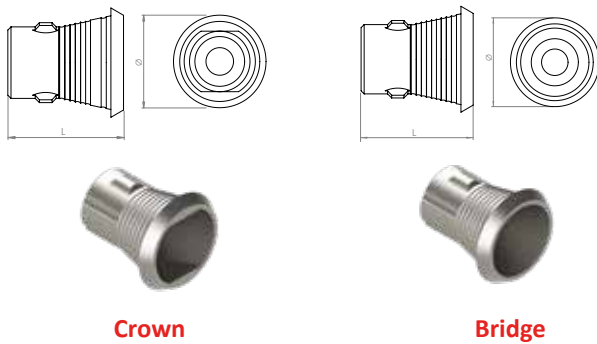
Angled Abutments



	GH	AH	Crown (Lock) Product No	Bridge (Nolock) Product No
Ø4.1 implant RN (regular neck)	Ø4.8 mm	3.5 mm	RNTLATIBLAH35	RNTLATIBNLAH35
	Ø4.8 mm	5.5 mm	RNTLATIBLAH55	RNTLATIBNLAH55
Ø4.8 implant WN (wide neck)	Ø6 mm	3.5 mm	WNTLATIBLAH35	WNTLATIBNLAH35
	Ø6 mm	5.5 mm	WNTLATIBLAH55	WNTLATIBNLAH55

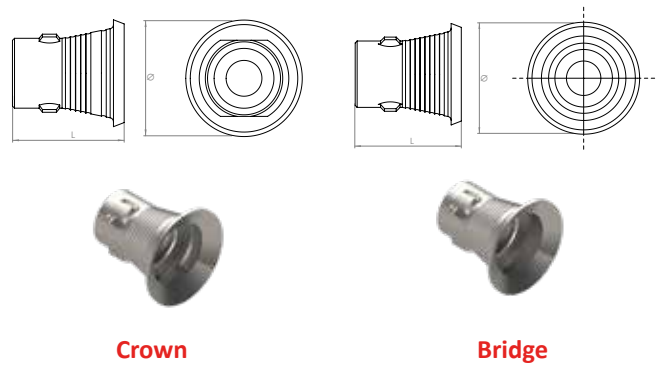
Multi-unit Ti-Base Abutments

Bone Level



L	Crown (Lock) Product No	Bridge (Nolock) Product No
3.5 mm	BLSMLTIBLAH35	BLSMLTIBNLAH35
5.5 mm	BLSMLTIBLAH55	BLSMLTIBNLAH55

Tissue Level



	Ø	L	Crown (Lock) Product No	Bridge (Nolock) Product No
Ø4.1 implant RN (regular neck)	Ø4.8 mm	3.5 mm	RNTLSMLTBLAH35	RNTLSMLTBNLAH35
	Ø4.8 mm	5.5 mm	RNTLSMLTBLAH55	RNTLSMLTBNLAH55
Ø4.8 implant WN (wide neck)	Ø6 mm	3.5 mm	WNTLSMLTBLAH35	WNTLSMLTBNLAH35
	Ø6 mm	5.5 mm	WNTLSMLTBLAH55	WNTLSMLTBNLAH55

Digital Scan Bodies



Material: Titanium Grade V, ZrN kaplama

Scan Bodies	Product No.
SP (slim platform)	SB016
NP (narrow platform)	SB011
RP (regular platform)	SB012
RN (regular neck)	SB031
WN (wide neck)	SB032

Scan Body



Multi-unit Scan Bodies	Product No.
Multi-unit (NP&RP)	SB013
Multi-unit (RN)	SB014
Multi-unit (WN)	SB015

Multi-unit Scan Body

Digital Analogs

 <p>BL (NP) IP0059</p>	 <p>BL (RP) IP0060</p>	 <p>BL (multi-unit, NP & RP) IP0061</p>	 <p>BL (SP) IP0069</p>
 <p>TL (RN) IP0064</p>	 <p>TL (WN) IP0065</p>	 <p>TL (multi-unit RN) IP0066</p>	 <p>TL (multi-unit WN) IP0067</p>

BL : Bone Level
 TL : Tissue Level
 SP : Slim Platform (Ø2.9 BL implant)
 NP : Narrow Platform (Ø3.2 - Ø3.7 BL implant)
 RP : Regular Platform (Ø4.1 - Ø4.8 BL implant)
 RN : Regular Neck (Ø4.1 TL implant)
 WN : Wide Neck (Ø4.8 TL implant)

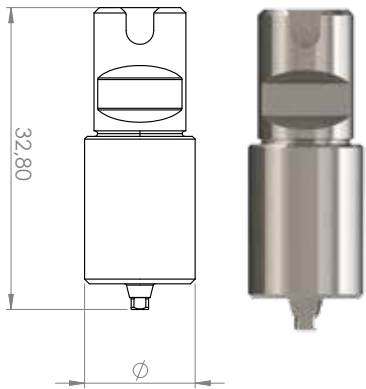
PRE-MILL ABUTMENTS

Pre-milled abutments are used to create customized abutments in cases where stock abutments are not the solution.

Bone
Level

Pre-mill Abutments

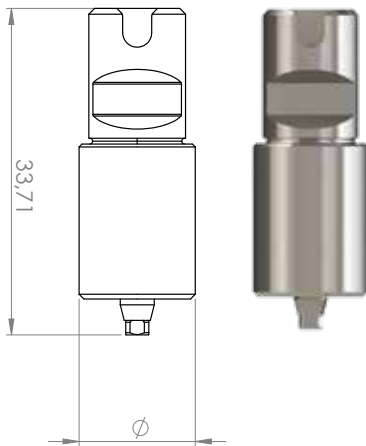
Bone Level



Platform	Diameter (mm)	Product No.
NP (narrow platform)	Ø12	BLPRA12NP
NP (narrow platform)	Ø16	BLPRA16NP
RP (regular platform)	Ø12	BLPRA12RP
RP (regular platform)	Ø16	BLPRA16RP
SP (slim platform)	Ø12	BLPRA12SP
SP (slim platform)	Ø16	BLPRA16SP

Tissue
Level

Tissue Level



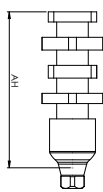
Platform	Diameter (mm)	Product No.
RP (regular platform)	Ø12	RNTLPRA12
RP (regular platform)	Ø12	WNTLPRA12
RP (regular platform)	Ø16	RNTLPRA16
RP (regular platform)	Ø16	WNTLPRA16



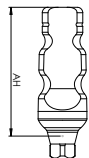
IMPRESSION COMPONENTS AND ANALOGS

Bone Level Impression Components and Analogs

Impression Post Open Tray

	AH		Product No.
	Narrow Platform	8.5 mm (short)	IP0013
		15 mm (long)	IP0001
	Regular Platform	8.5 mm (short)	IP0015
		15 mm (long)	IP0003

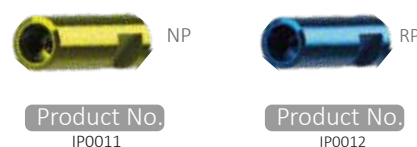
Impression Post Closed Tray

	AH		Product No.
	Narrow Platform	9 mm (short)	IP0017
		12 mm (long)	IP0005
	Regular Platform	9 mm (short)	IP0019
		12 mm (long)	IP0007

Impression Post Plastic Caps



Analogs



Tissue Level Impression Components and Analogs

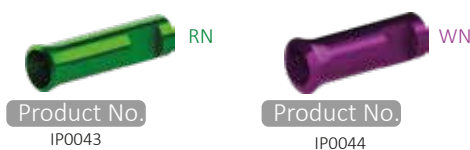
Impression Post Open Tray

	AH		Product No.
	RN	9.5 mm	IP0035
		9.5 mm	IP0037
	WN	9.5 mm	IP0037

Impression Post Closed Tray

	AH		Product No.
	RN	10.5 mm	IP0039
		10.5 mm	IP0041
	WN	10.5 mm	IP0041

Analogs



NP : Narrow Platform (Ø3.2 - Ø3.7 BL implant)
 RP : Regular Platform (Ø4.1 - Ø4.8 BL implant)
 RN : Regular Neck (Ø4.1 TL implant)
 WN : Wide Neck (Ø4.8 TL implant)

DISCOVER *the* POWER!



Rock-bil®



Higher stiffness and tensile strength!
(min. 900 Mpa)

ROCK-BIL



Screw Retained (Multi-unit) Impression Components and Analogs

Bone Level



Impression Post Open Tray,
Crown (Lock)

Ürün Kodu IP0026



Impression Post Open Tray,
Bridge (Nolock)

Ürün Kodu IP0073



Impression Post Closed Tray

Ürün Kodu IP0028



*Straight Analog

Ürün Kodu IP0030



*15° Angled Analog

Ürün Kodu IP0031



Crown

Plastic Coping

Ürün Kodu IP0033



Bridge

Plastic Coping

Ürün Kodu IP0034

*Flat and angled analog platforms are identical and interchangeable. (NP&RP)

Tissue Level



RN Impression Post
Open Tray

Ürün Kodu IP0045



WN Impression Post
Open Tray

Ürün Kodu IP0047



RN Impression Post
Closed Tray

Ürün Kodu IP0049



WN Impression Post
Closed Tray

Ürün Kodu IP0051



RN Analog

Ürün Kodu IP0053



WN Analog

Ürün Kodu IP0054



Bridge

RN Plastic Coping

Ürün Kodu IP0055



Bridge

WN Plastic Coping

Ürün Kodu IP0056

NP : Narrow Platform (Ø3.2 - Ø3.7 BL implant)
RP : Regular Platform (Ø4.1 - Ø4.8 BL implant)
RN : Regular Neck (Ø4.1 TL implant)
WN : Wide Neck (Ø4.8 TL implant)

KIT & TOOLS

Surgical Kit



Product No. CERS

Manufactured from polyphenylsulfone (PPSU) material with Italian aesthetics and patented grommet-less technology, the Bilimplant® Surgical Kit:

- * simplifies the cleaning and disinfection process,
- * ensures maximum safety during surgical procedures,
- * prevents contamination between silicone and plastic elements.

Material: Polyphenylsulfone (PPSU)

Surgical Kit Instruments



Surgical Kit Instruments

Pilot / Ø2.9	Ø3.2	Ø3.7	Ø4.1	Ø4.8

Final Drills	 		 		 		 		 	
	Long	Short	Long	Short	Long	Short	Long	Short	Long	Short
	PDL22	PD22	IDL32	ID32	IDL37	ID37	IDL41	ID41	IDL48	ID48
	Ø	Ø2.35	Ø2.7	Ø3.2	Ø3.6	Ø4.3				

Cortical					
	CD29	CD32	CD37	CD41	CD48
Ø	Ø2.9	Ø3.2	Ø3.7	Ø4.1	Ø4.8



Bone Profiler		
	BLPONP	BLPORP
Platform	NP	RP

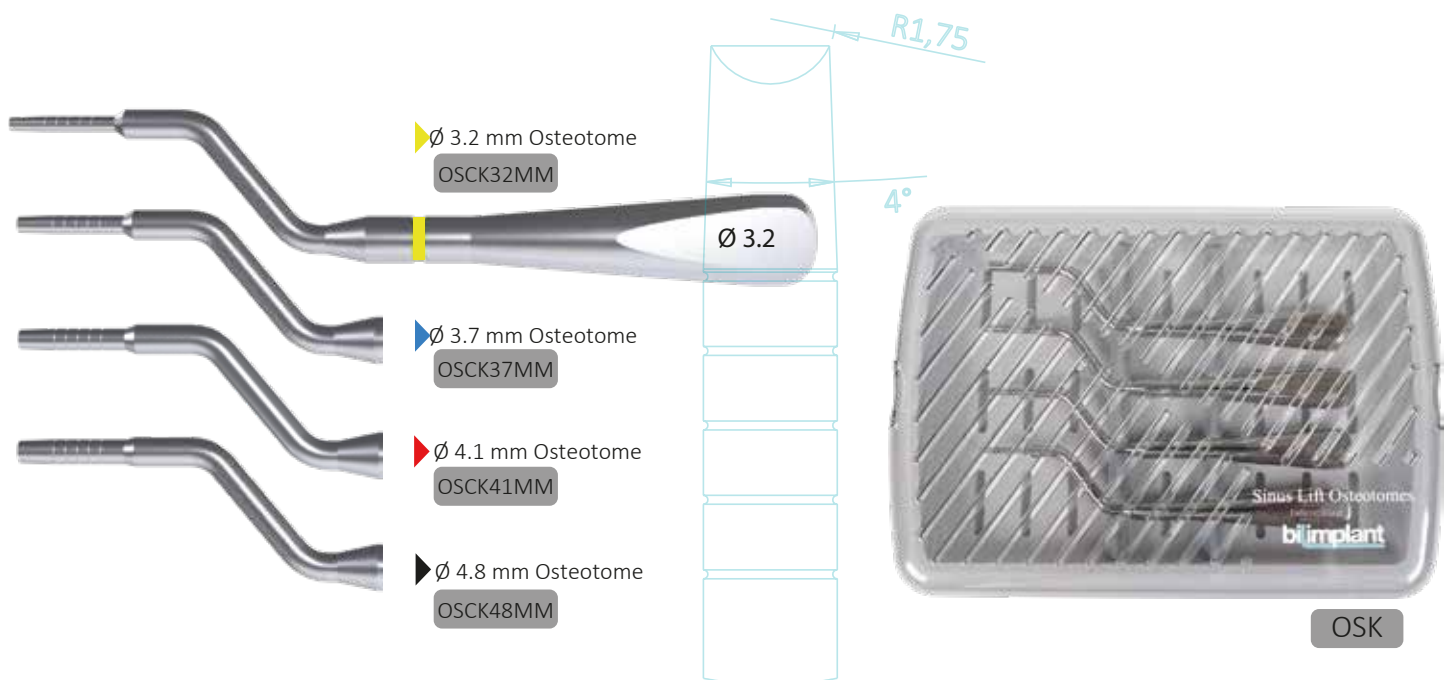
Marking (Conical Drill) CND25	Marking (Round) PDRB	Drill Extension DEXT

Stopper Kit

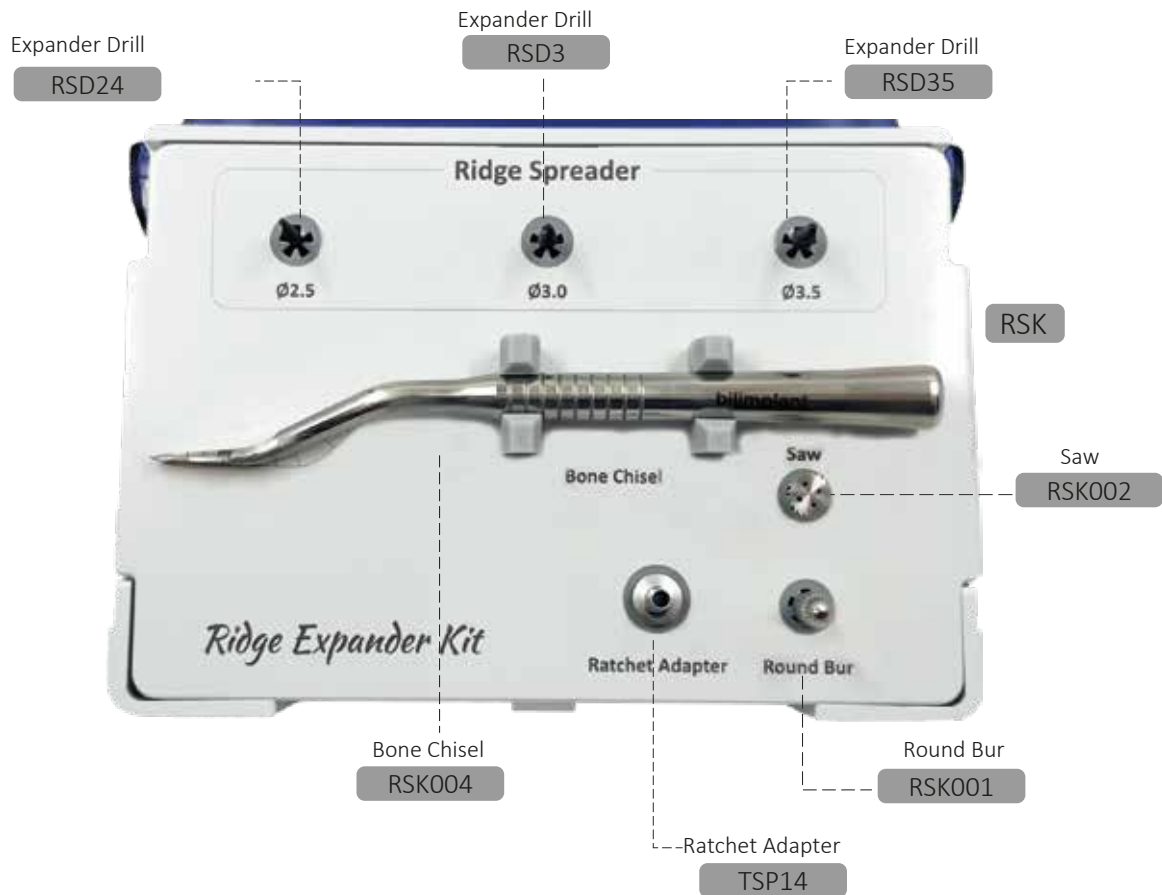
6mm	 DS3206	 DS3706	 DS4106	 DS4806
8mm	 DS3208	 DS3708	 DS4108	 DS4808
10mm	 DS3210	 DS3710	 DS4110	 DS4810
12mm	 DS3212	 DS3712	 DS4112	 DS4812
14mm	 DS3214	 DS3714	 DS4114	 DS4814



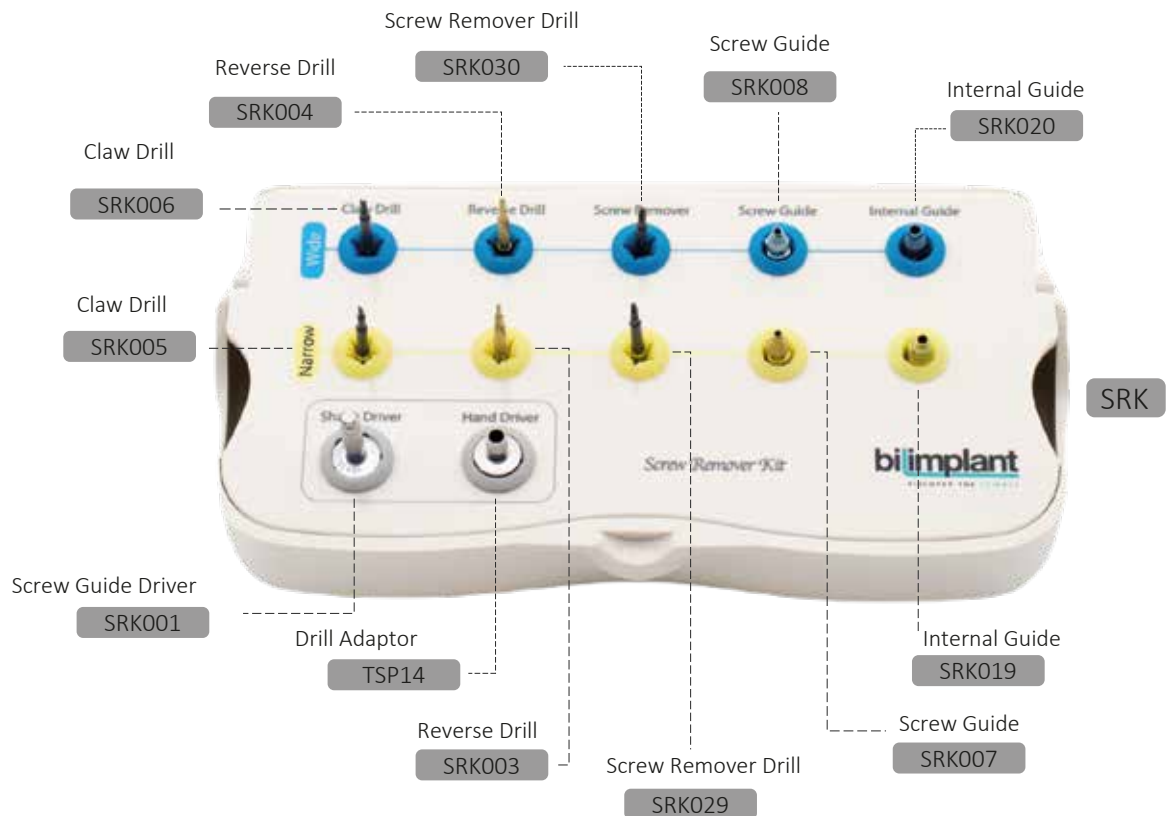
Sinus Osteotome Kit



Ridge Expander Kit



Screw Removal Kit



Please read the screw removal kit user manual for correct use.

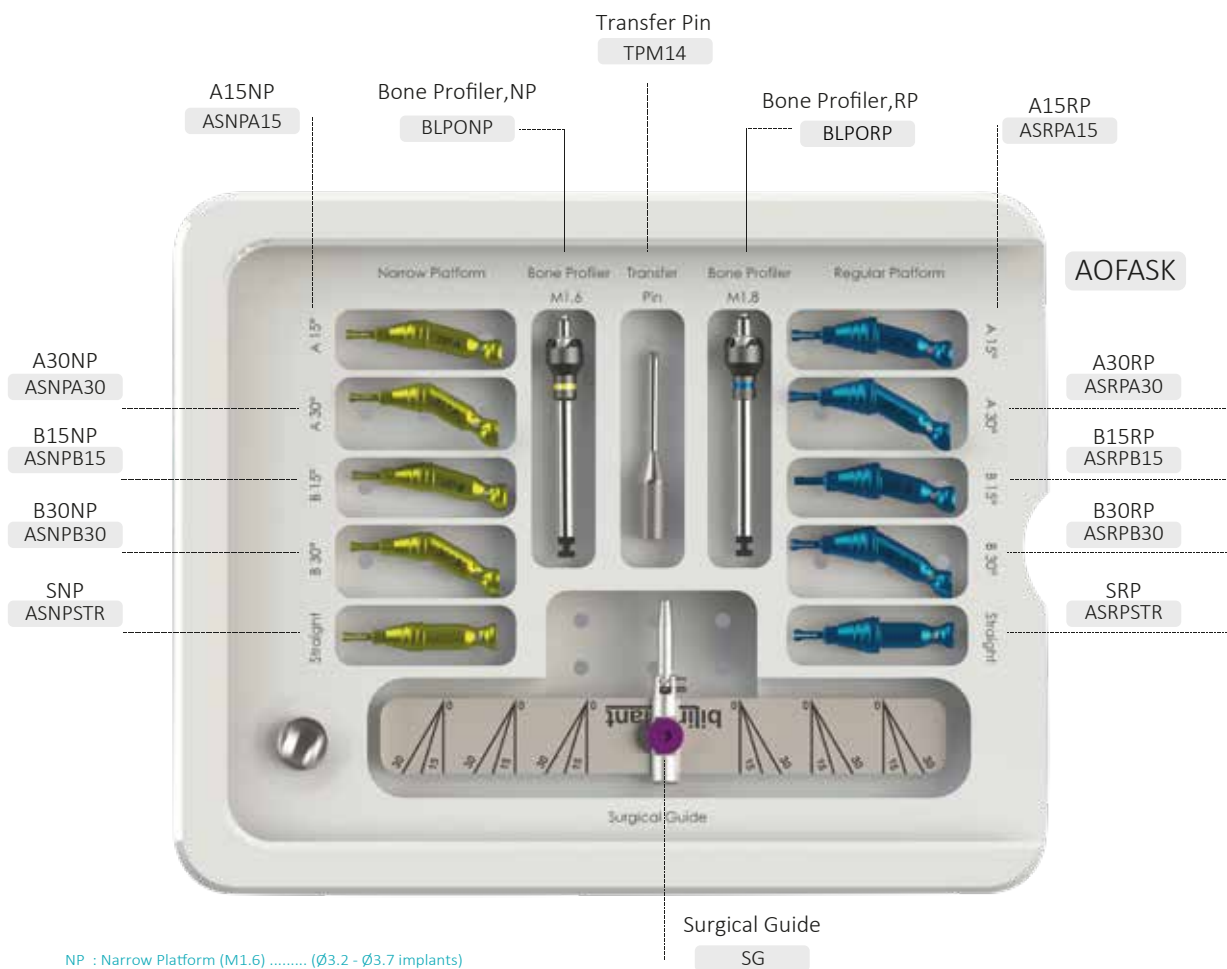
bguide Guided Surgery Kit



BGS

Guiding You to Clinical Success with Ease & Confidence

All on Four & Abutment Selection Kit



Orthodontic Mini Screw Kit



SCERS

GBR Kit



SMVS

DIGITAL LIBRARIES

Our Digital Solution Partners

exocad

3shape
IMPLANT STUDIO

RealGUIDE®
UNIVERSAL OPEN SYSTEM



NemoScan

OSSTELL
A UGH COMPANY

SmartPeg Reference Guide
Valid from December 2018|25016-67

Implant Company	Model	Diameter (mm)	SmartPeg	New
Bilimplant	Bone Level Implant	3.2 - 3.7	100402	Type21
	Bone Level Implant	4.1 - 4.8	100480	Type49

Everything is much easier and safer with our digital solution partners.

You can access all our digital libraries via the link <https://www.bilimplant.com/en/download-center/digital-library/>

Vision
Experience
Quality
Passion
Science

A STRONG STEP FOR INNOVATIVE TECHNOLOGIES OF THE FUTURE!

First R&D Center Approved by the Ministry of Industry and Technology in the Dental Sector



ProimTech Sağlık Ürünleri A.Ş.

Dudullu OSB Mahallesi İmes 305 Sokak C blok No:3

Ümraniye / İstanbul-Türkiye

www.bilimplant.com



CE 2975

bi|implant
DISCOVER THE SCIENCE



Trust, Success, and Happiness for Generations!



